

# Central Pacific Hurricane Center and National Hurricane Center Unification Proof of Concept

Daniel Brown, Branch Chief, Hurricane Specialist Unit  
National Hurricane Center

U.S. Department of Commerce  
National Oceanic and Atmospheric Administration  
National Weather Service / National Hurricane Center

# NWS Proof of Concept

## CPHC-NHC Unification

**Purpose: Unify the Central Pacific Hurricane Center (CPHC) operational functions in the central Pacific basin under the National Hurricane Center (NHC).**

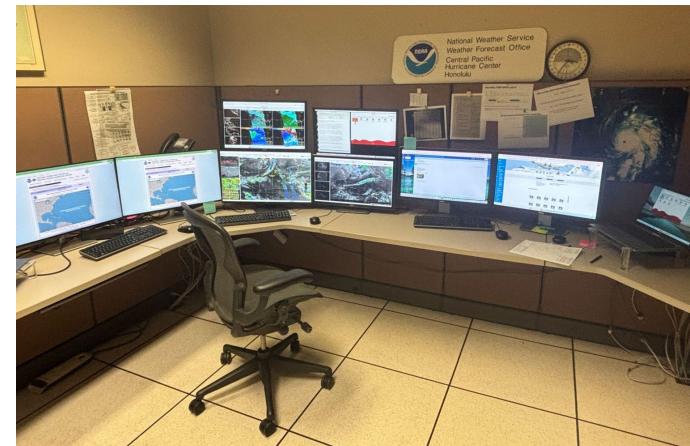
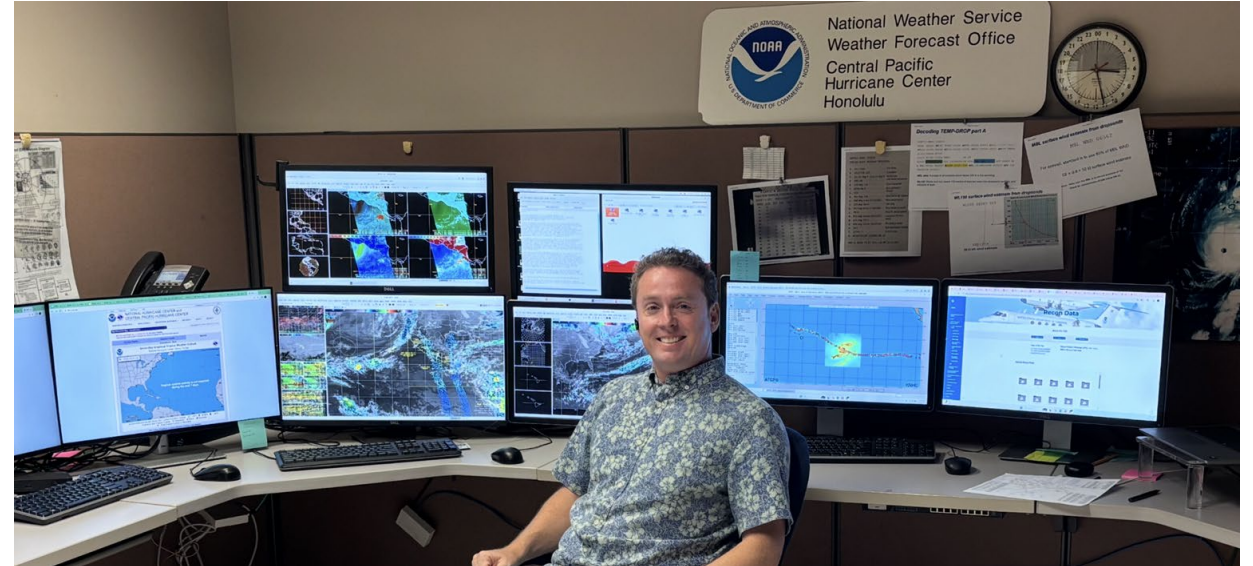
- **Demonstration period June 1, 2025 to January 24, 2026**
- **Two HFO Forecasters integrated into HSU Operations**

### **Goals:**

- **Unify the U.S. national hurricane center missions in the central and eastern Pacific basins**
- **Provide a single chain of command for operations of the U.S. hurricane mission in the central and eastern Pacific basins**
- **Facilitate consistency of messaging and operational procedures**
- **Establish a continuity of operations capability to better serve the American people.**

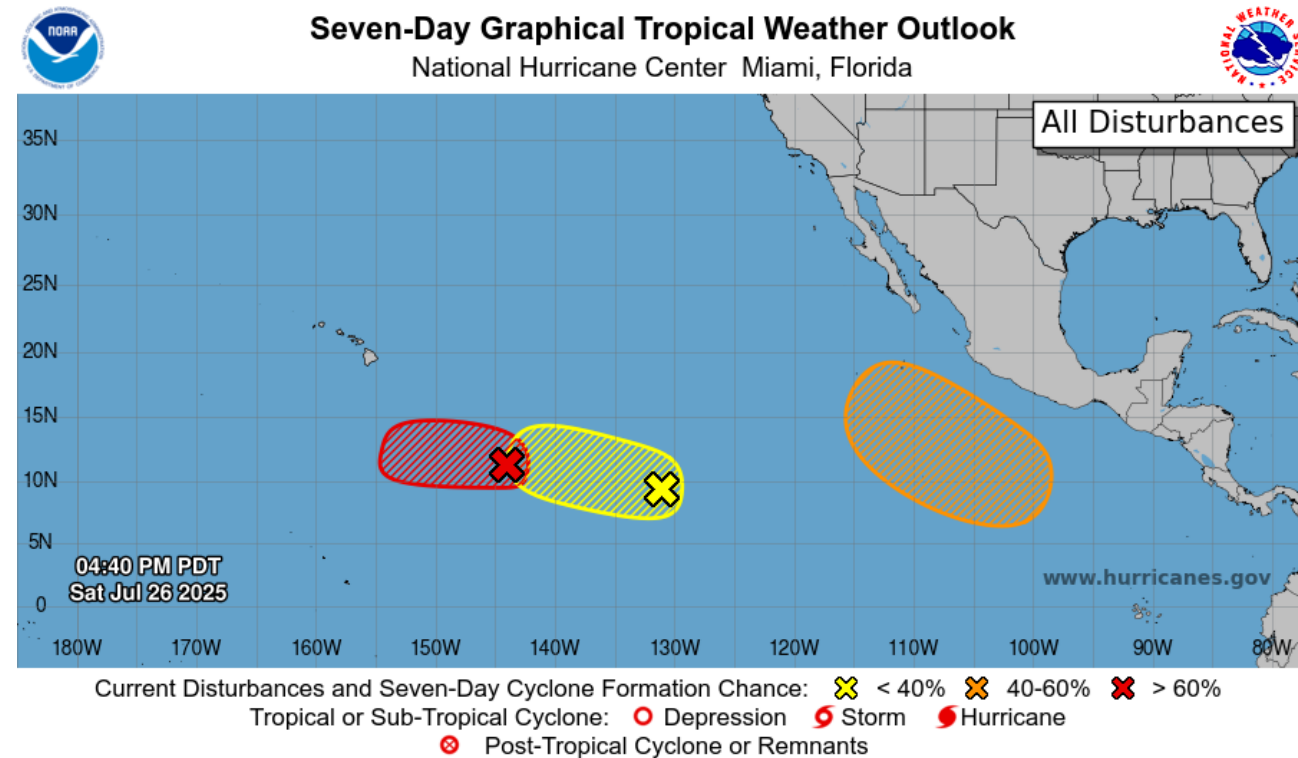
# CPHC Technical Setup

- CPHC desk configuration included an HFO AWIPS, and remote access to NHC ATCF, NHC AWIPS
- Allowed seamless Miami-Honolulu text product review, sharing, and collaboration
- Remote access to WPC ATCF and AWIPS for backup operation
- Google Meet/Chat and Slack used for coordination



# Enhancement to the Tropical Weather Outlook

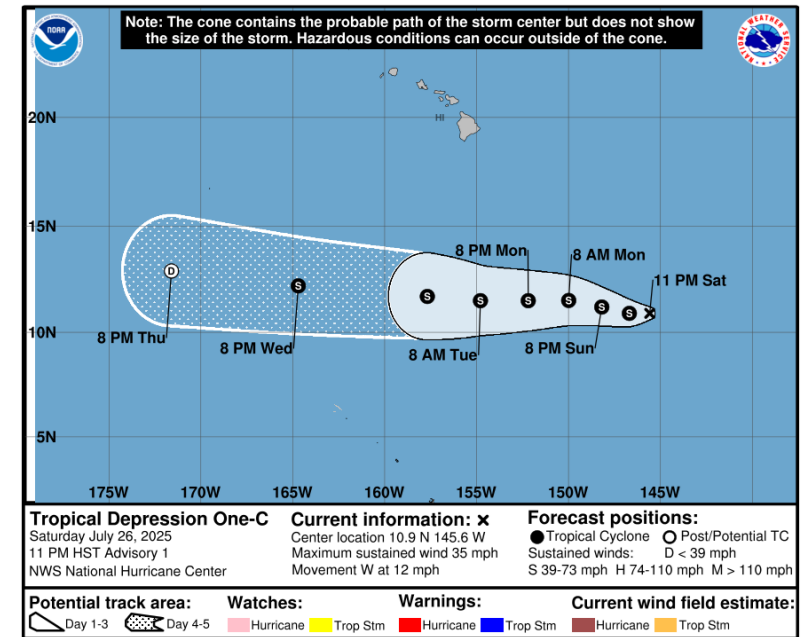
- NHC TWO expanded to include the CPAC basin
- Provided a single graphic covering entire Pacific east of the dateline
- Fulfilled a longstanding request from core partners
- CPAC TWO was unchanged, but included information on active EPAC systems



Example of the combined eastern and central Pacific graphical Tropical Weather Outlook

# Seamless to Customers and Partners

- No changes to advisory products or headers
- Central Pacific basin advisory products were issued through existing “CP” headers and “naming” practices between the eastern and central Pacific did not change.
- Basin-crosser product “handoffs” continued as normal.



## NEXT ADVISORY

Future information on Kiko can be found under Central Pacific basin headers beginning at 500 AM HST, under AWIPS header HFOTPCP4 and WMO header WTPA34 PHF0. Products will continue to be available on the web at [hurricanes.gov](http://hurricanes.gov)

\$\$

Forecaster Gibbs (CPHC)

# CPHC/NHC Accomplishments

- Increased forecaster proficiency
  - Each CPHC forecaster issued more than 55 advisory packages
  - More packages than an individual forecaster issues over several years at CPHC
- NHC issued 47 (66%) of the advisory packages for CPAC storms in 2025
- CPAC forecasters issued about a third of the Pacific Tropical Weather Outlooks in 2025

```
BULLETIN
Hurricane Flossie Advisory Number 9
NWS National Hurricane Center Miami FL EP062025
300 AM CST Tue Jul 01 2025

...FLOSSIE CONTINUES TO STRENGTHEN OFFSHORE THE COAST OF SOUTHWEST
MEXICO...

SUMMARY OF 300 AM CST...0900 UTC...INFORMATION
-----
LOCATION...16.9N 105.1W
ABOUT 155 MI...250 KM SSW OF MANZANILLO MEXICO
MAXIMUM SUSTAINED WINDS...85 MPH...140 KM/H
PRESENT MOVEMENT...WNW OR 300 DEGREES AT 10 MPH...17 KM/H
MINIMUM CENTRAL PRESSURE...981 MB...28.97 INCHES

WATCHES AND WARNINGS
-----
CHANGES WITH THIS ADVISORY:

None.

SUMMARY OF WATCHES AND WARNINGS IN EFFECT:

A Tropical Storm Warning is in effect for...
* Punta San Telmo to Playa Perula

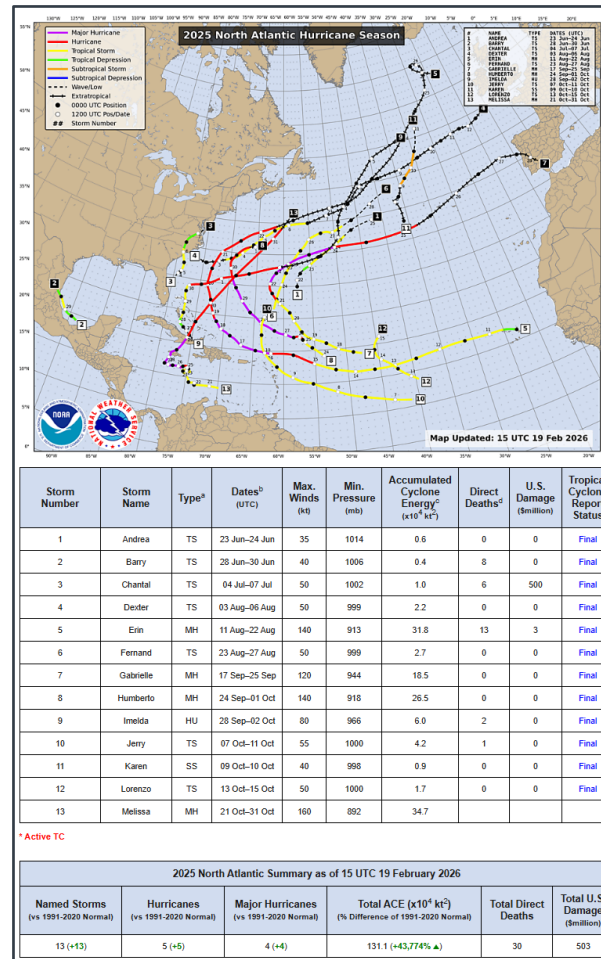
A Tropical Storm Watch is in effect for...
* East of Punta San Telmo to Zihuatanejo
* North of Playa Perula to Cabo Corrientes

NEXT ADVISORY
-----
Next intermediate advisory at 600 AM CST.
Next complete advisory at 900 AM CST.

$$
Forecaster Jelsema
```

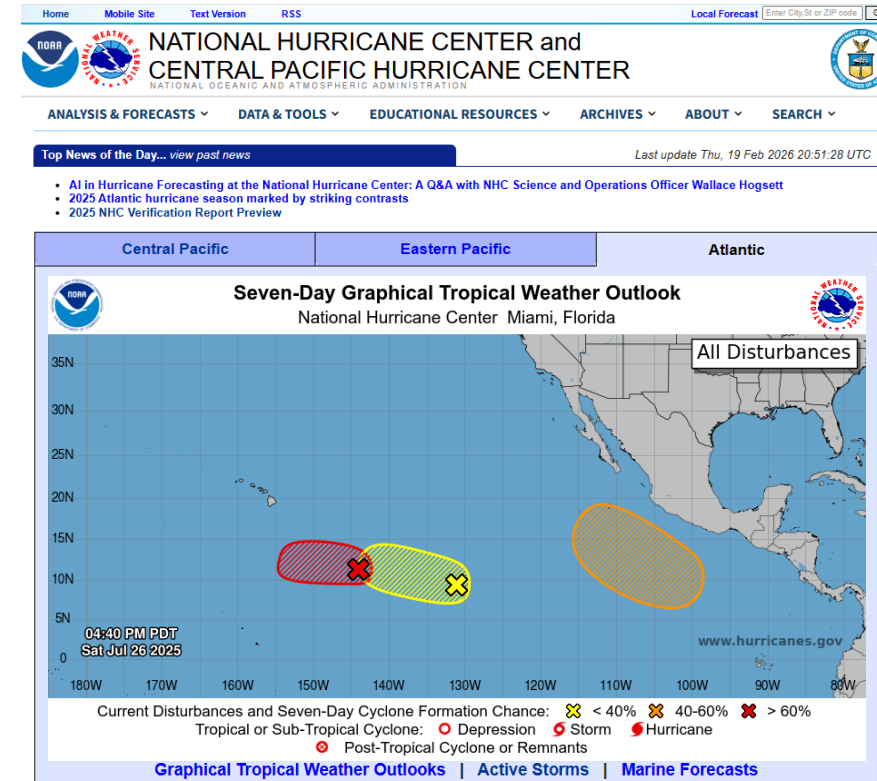
# CPHC/NHC Accomplishments

- Tropical Cyclone Reports completed at a faster rate
- Allowed increased IDSS & social media messaging
  - Second state-level weekly briefing conducted to highlight potential TC threats
  - “Reels” issued to discuss TWO
- Development of auto-updating seasonal track maps and summary tables, including for the Central Pacific



# Next Steps

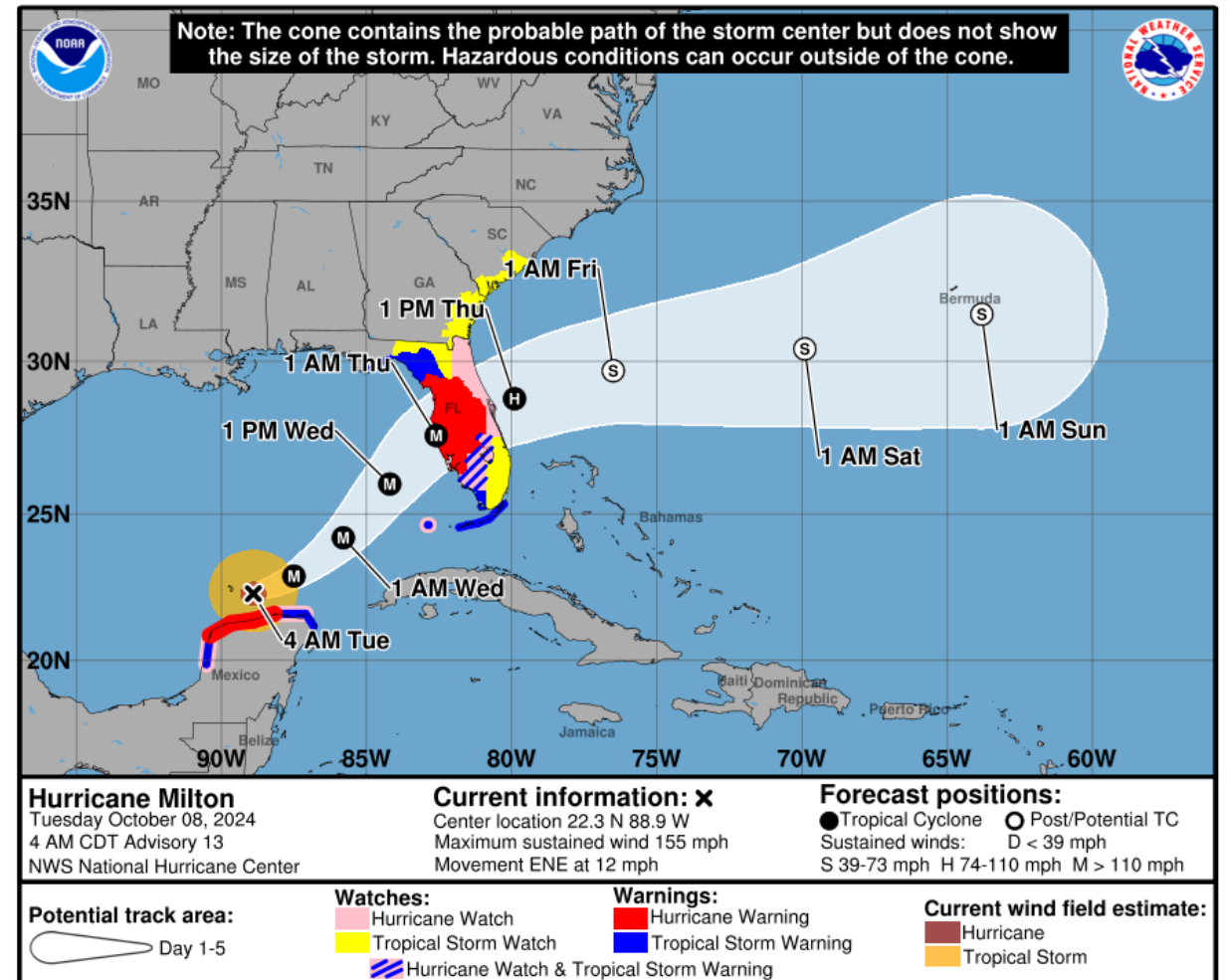
- **2026 Posture**
  - Dedicated staff in Hawaii supporting forecast operations
  - Continued unification of command for forecast operations in Honolulu and Miami
- **2027 Plans (If Project Successful)**
  - Increase the number of available product “bins” to eliminate handoffs for basins crossers
- **Things that will not change**
  - Central Pacific name list will continue to be used
  - Central Pacific products on hurricanes.gov



# Updates to NHC Products for 2026

## Inclusion of Inland U.S. Watches and Warnings on Cone Now Operational

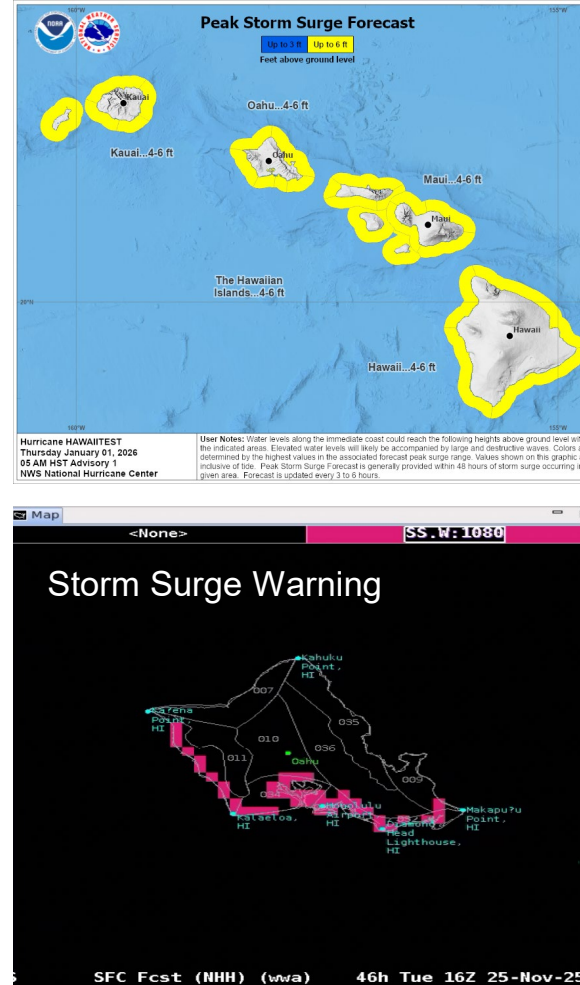
- NHC cone of uncertainty with inland U.S. watches and warnings becomes operational in 2026
- **Key features:**
  - Inland U.S. watches and warnings
  - One shading for entire 5-day cone
- Better representation of both coastal and inland wind risk



# Updates to NHC Products for 2026

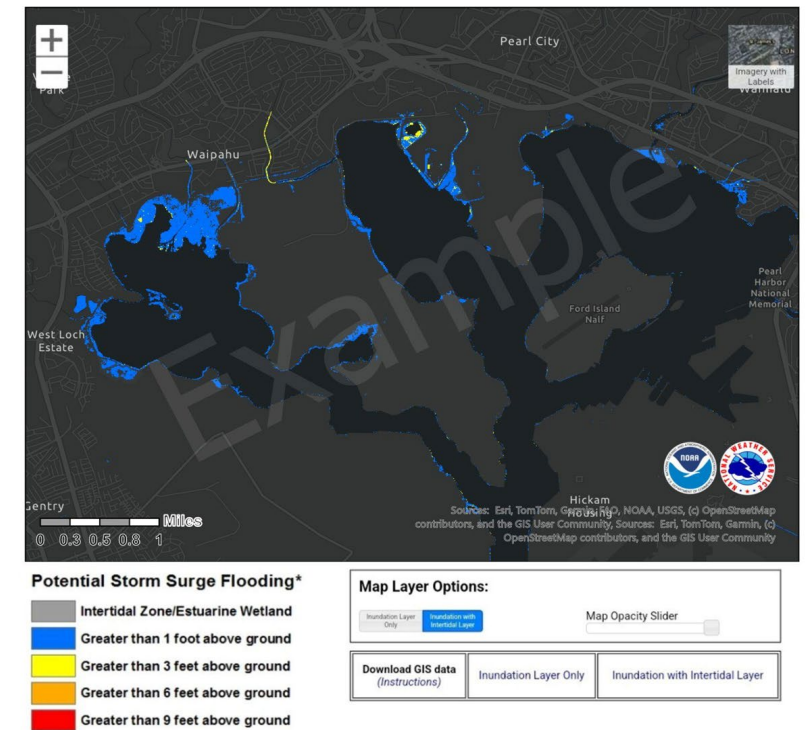
## Hawaiian Islands: New Storm Surge Products

- Storm surge operational products and warning services will be available for the main Hawaiian Islands in 2026
- **Storm surge Watches (Warnings)** will be issued 48 (36) hours prior to arrival of tropical-storm-force winds if there is a risk for life-threatening storm surge
- **Peak Surge Graphic** will be issued when a watch/warning is in effect
- **Potential Storm Surge Flooding Map** will be made available up to 72 hours prior to landfall, dependent on forecast confidence



## Potential Storm Surge Flooding Map (Inundation) EXAMPLE

NHC Potential Storm Surge Flooding Map  
Hawaii Test CP82 (2025) Advisory 01  
From 06 AM HST Monday November XX to 09 AM  
HST Friday November XX



\*Displayed flooding values indicate the water height that has about a 1-in-10 (10%) chance of being exceeded.

# Thank You!

Questions/Comments

[Daniel.P.Brown@noaa.gov](mailto:Daniel.P.Brown@noaa.gov)

[Brad.Reinhart@noaa.gov](mailto:Brad.Reinhart@noaa.gov)

[Robert.Berg@noaa.gov](mailto:Robert.Berg@noaa.gov)