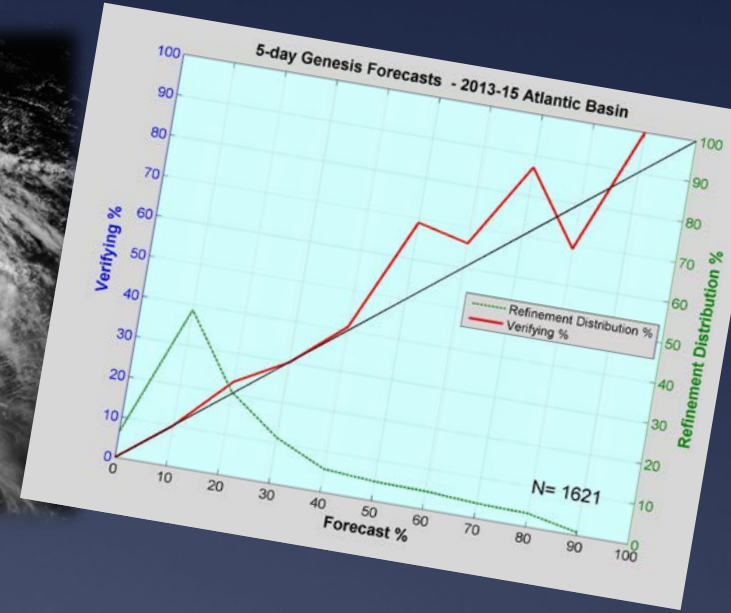
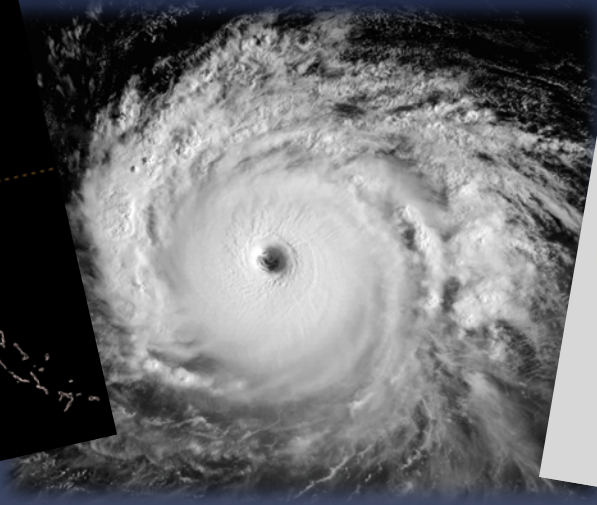
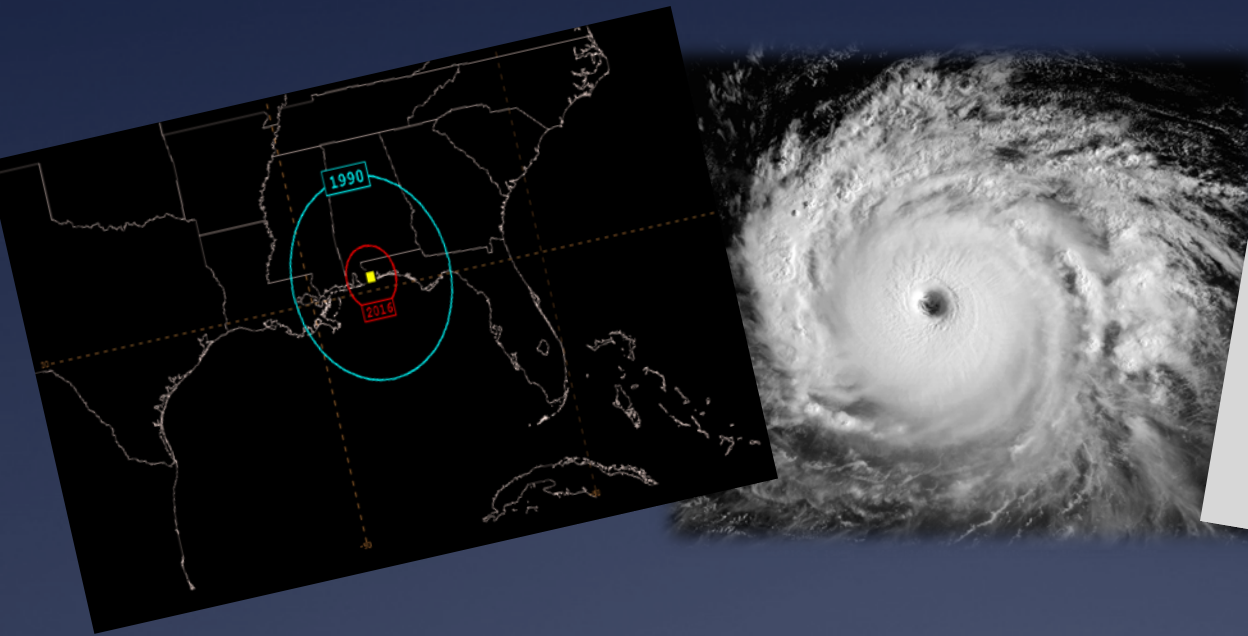
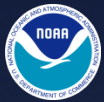




# Session 8 – Global Model Advances and Plans



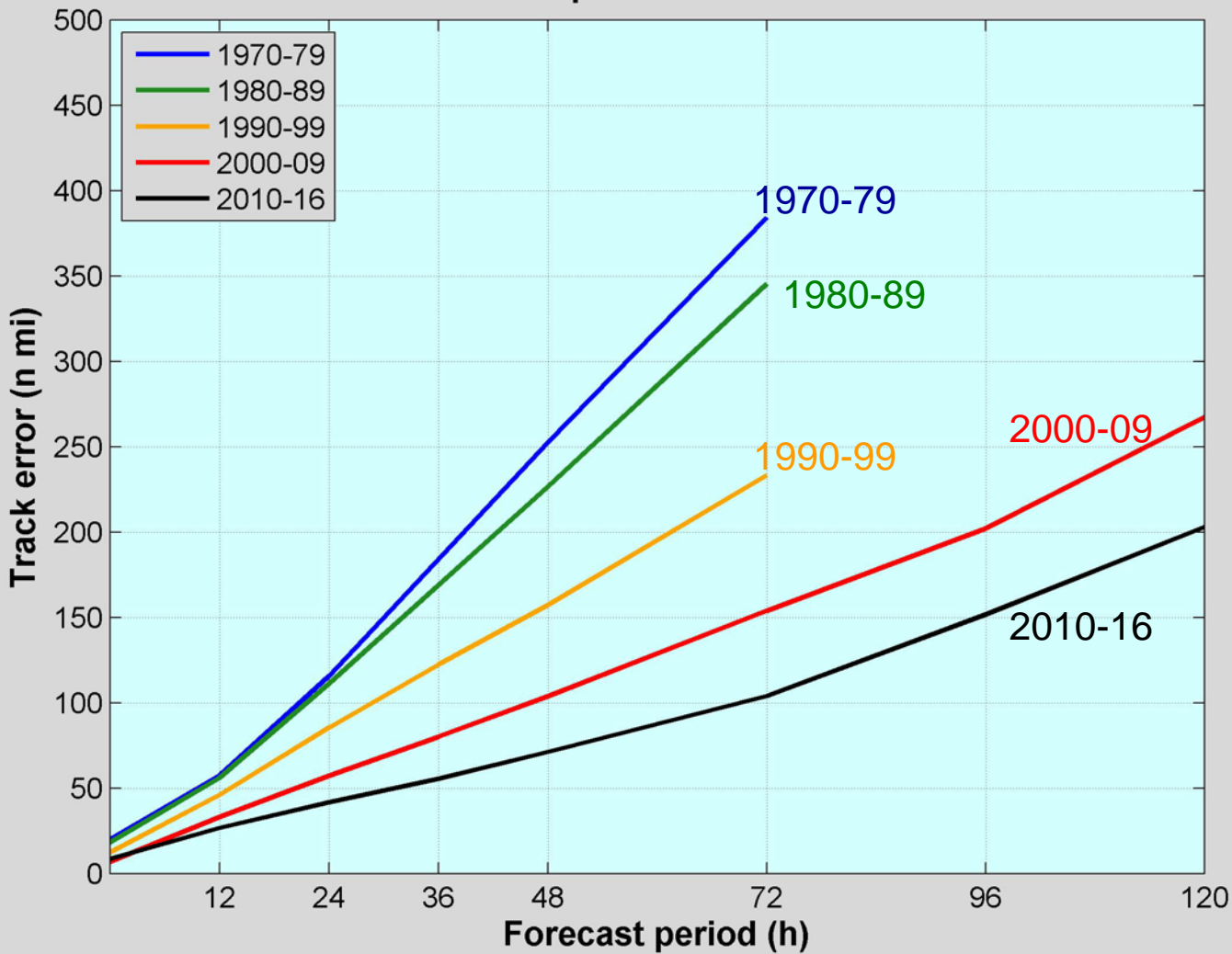
Chris Landsea (with thanks to John Cangialosi)  
National Hurricane Center



# Atlantic Track Error Trends – Official NHC

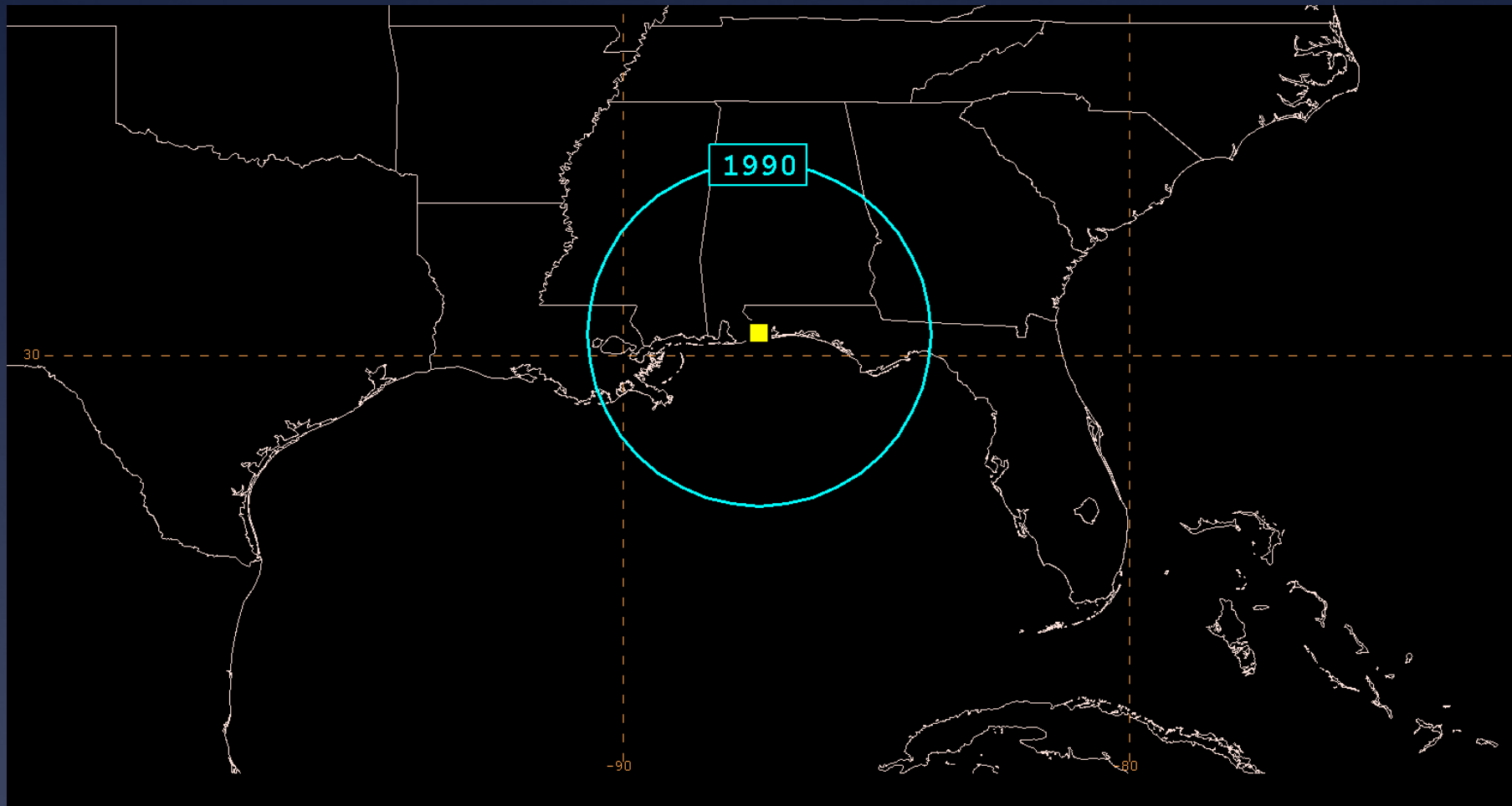


NHC Official Average Track Errors  
Atlantic Basin Tropical Storms and Hurricanes



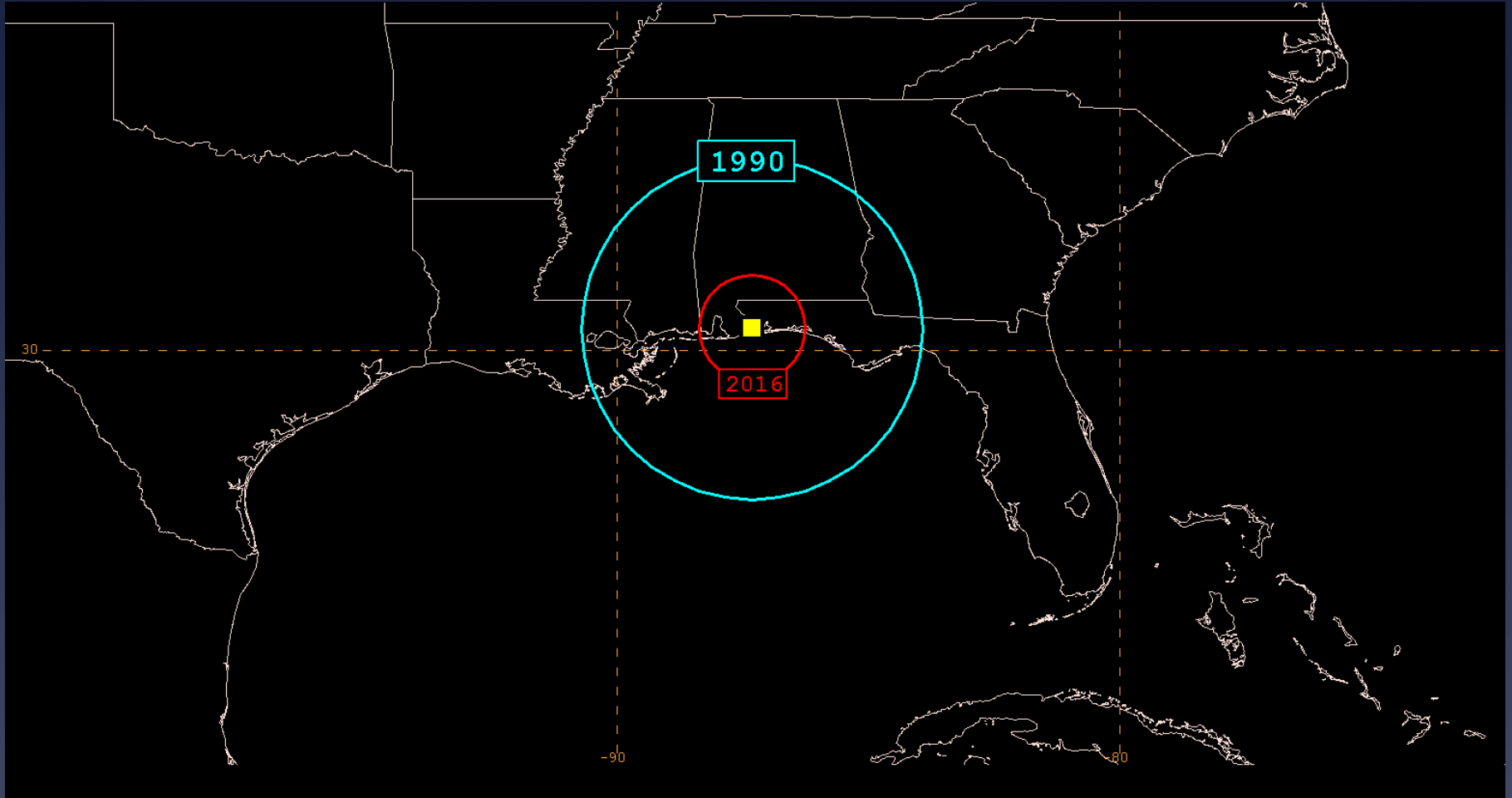


# 2 day average track errors



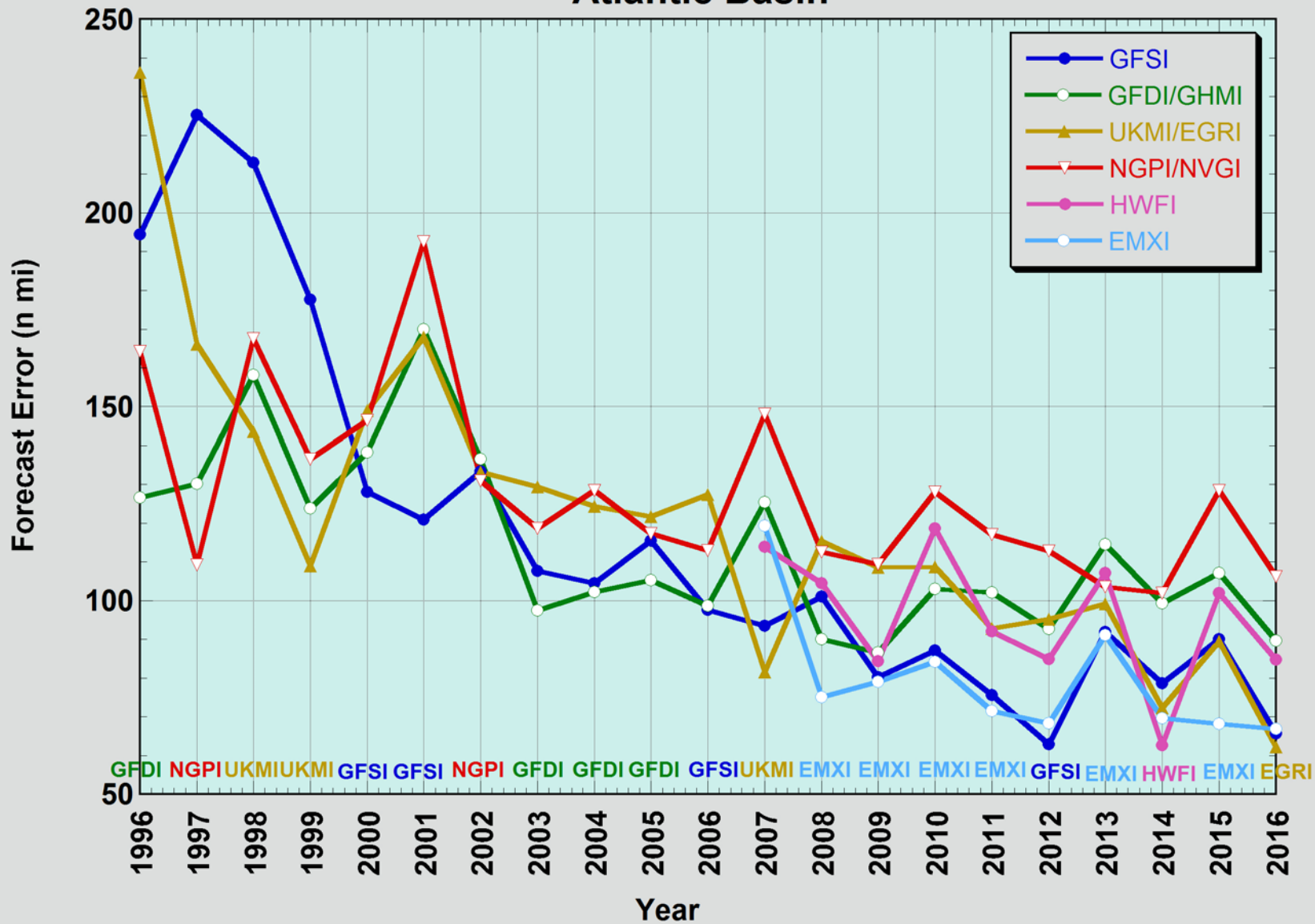


# 2 day average track errors



# Atlantic Track Error Trends - Guidance

## 48-h Track Forecast Guidance Trends Atlantic Basin



# NHC Forecasting of Tropical Cyclones with Global Models

## 1. Track

- a. Tremendous advances in last couple of decades
- b. Reaching the limits of predictability?

## 2. Genesis

- a. Substantial skill currently, primarily deterministic models
- b. No quantitative use of single-model ensembles

## 3. Size (34/50/64 kt wind radii)

- a. Some skill exists
- b. No use of single-model ensembles

## 4. Intensity

- a. Some skill exists, but does not contribute to consensus