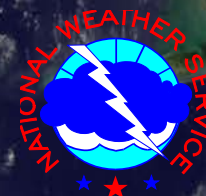


IHC Session 1: New NHC Products for 2017

Eric Blake, Dan Brown, Matthew Green
IHC Miami
3/14/2017



STORM SURGE WATCH/WARNING

- Operational in 2017

AVAILABILITY:

- Graphic on NHC website
- Watch/Warning section of the NHC Public Advisory
- Local NWS Hurricane Local Statements

Prototype Storm Surge Watch/Warning Graphic*

Tropical Depression NINE
Advisory 12 Issued: 10:00 AM CDT Wed Aug 31



SUMMARY OF WATCHES AND WARNINGS IN EFFECT:

A Hurricane Warning is in effect for...
* Anclote River to Indian Pass Florida

A Storm Surge Warning is in effect for...
* Aripeka to Indian Pass Florida

NHC PRODUCT UPDATES

POTENTIAL TROPICAL CYCLONE



BEFORE A CYCLONE FORMS

The NHC can now issue advisories, watches, and warnings for tropical disturbances

- A threat of bringing tropical storm or hurricane conditions to land within 48 hours.

WATCH/WARNING

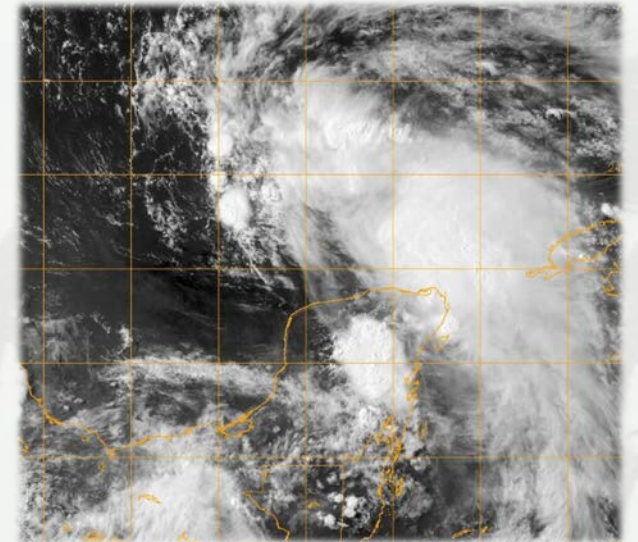
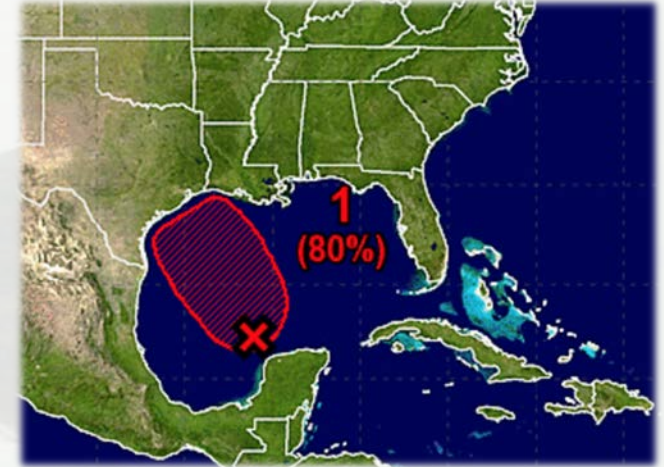
Regular TS/Hurricane watch and warning criteria applies

- Watch – conditions possible within 48 h
- Warning – conditions expected within 36 h

WHAT DO WE CALL IT?

Systems would be identified as **Potential Tropical Cyclones** with the *same numbering system as depressions* – “One”, “Two”, etc.

All normal advisory products issued

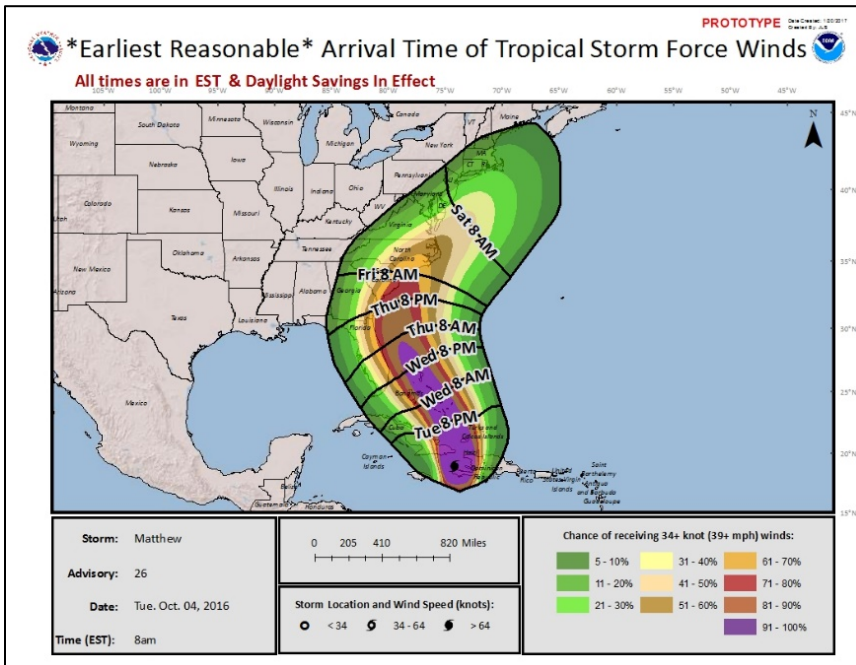


EXPERIMENTAL TIME OF ARRIVAL GRAPHIC

Accounts for forecast uncertainty (track/intensity/size)

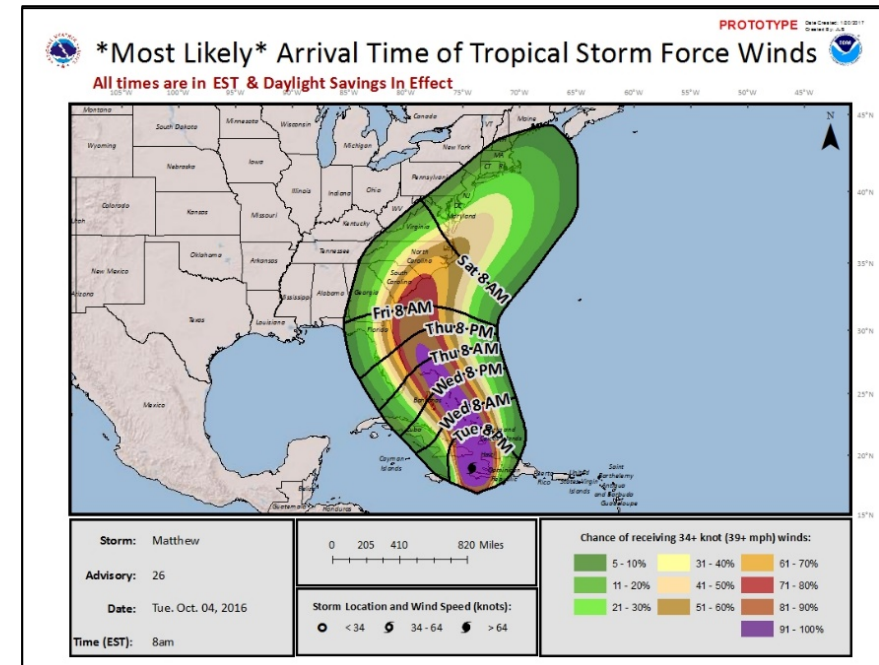
'EARLIEST REASONABLE' ARRIVAL TIME

- No more than a 10% chance of onset
- Most conservative / Risk-averse



'MOST LIKELY' ARRIVAL TIME

- Equally likely to occur before as after



NHC PRODUCT UPDATES GRAPHICS



UPDATE TO NHC GRAPHICAL PRODUCTS

Consistent background maps with a 'cleaner' look and feel

- Storm size (initial wind field) displayed on the error cone
 - reinforcing hazardous conditions occur outside the cone.

