

Collaborative Decision Making Innovations

Powering Readiness, Response & Recovery

Connecting Federal, State, Local & Regional Partners

For Improved Situational Awareness, Coordination and Response

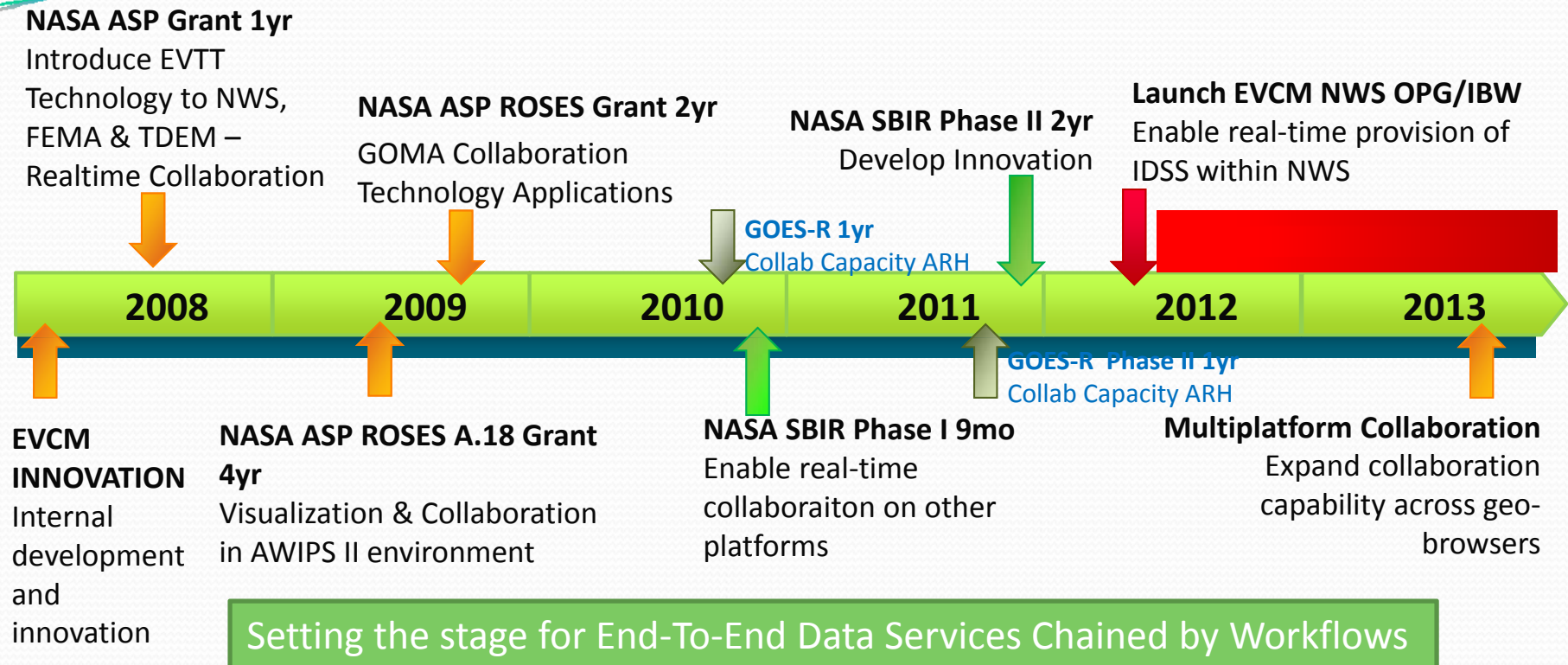
Dave Jones, Founder & CEO, 2013 AMS Fellow
StormCenter Communications, Inc.

March 7, 2013

IHC & Tropical Cyclone Research Forum
Invited Presentation

StormCenter
COMMUNICATIONS, INC.

EVCM Collaboration Technology Evolution



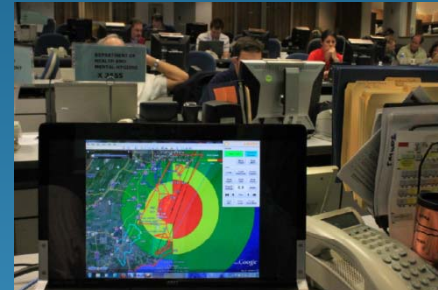
EVCM – Geospatially Enabled Cyber-Infrastructure



StormCenter EVCM Support



NWS LWX IMET Support



EVCM Display/Projection Computer



EVCM Montgomery Co.



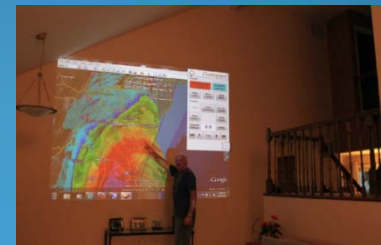
EVCM Baltimore City



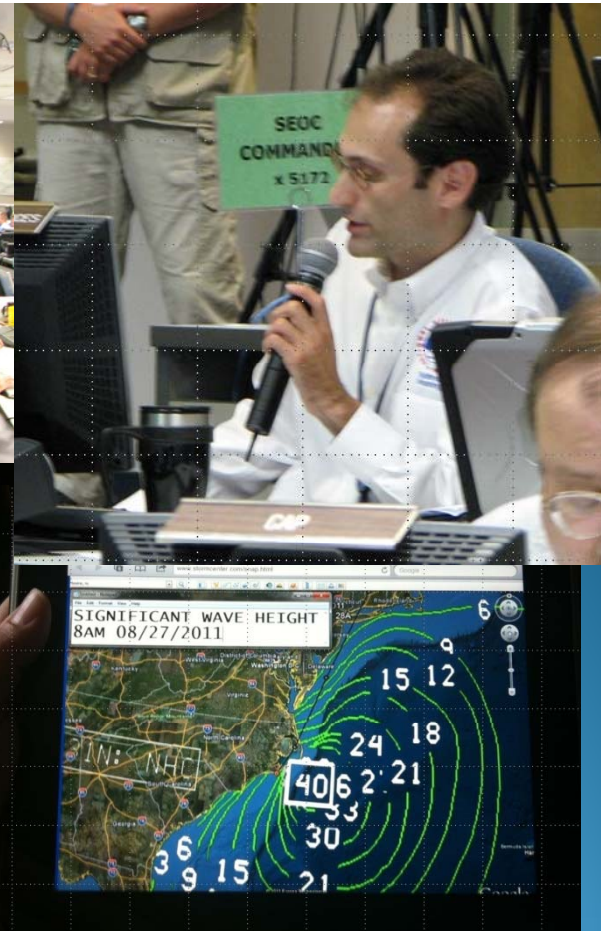
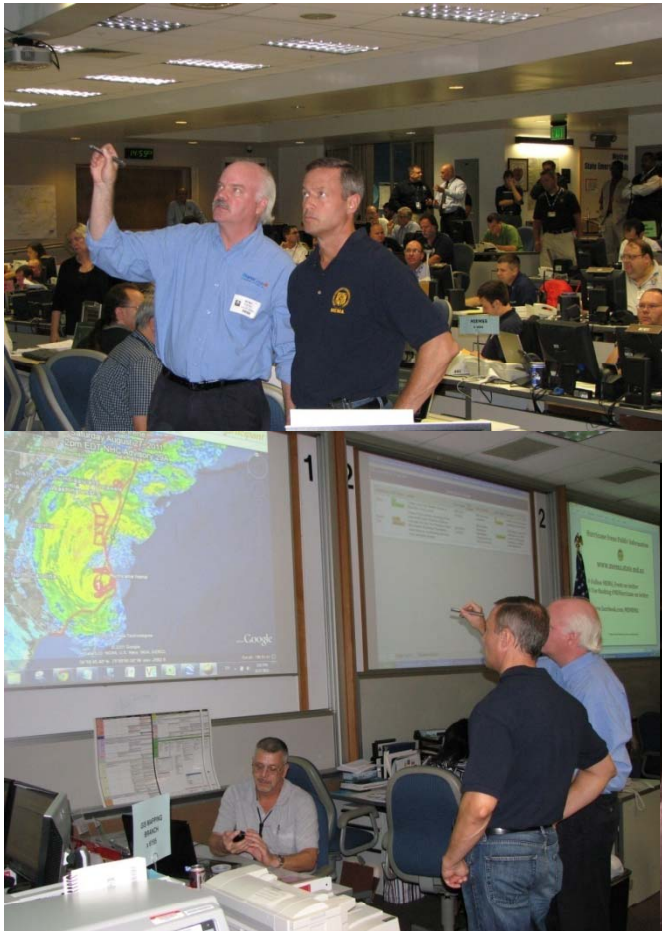
Governor, Lt. Governor & MD State Police Commander
IHC & Tropical Cyclone Research Forum
Invited Presentation



EVCM Installed on SEOC Commanders Computer



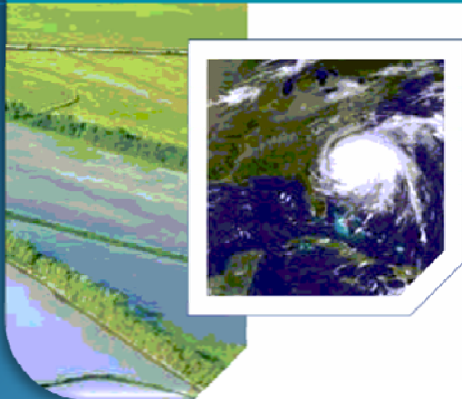
EVCM Anne Arundel Co.
StormCenter
COMMUNICATIONS INC.



IHC & Tropical Cyclone Research Forum
Invited Presentation

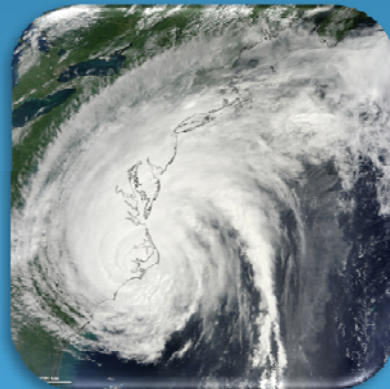
StormCenter
COMMUNICATIONS INC.

FEATURED PROJECTS AND EVENTS



"StormCenter's technology allowed us to access data that we had not been able to access in the past. By combining NASA, NOAA and our own GIS information, we were able to improve our situational awareness in real time so we could better serve the citizens of Maryland."

Martin O'Malley
Governor of Maryland

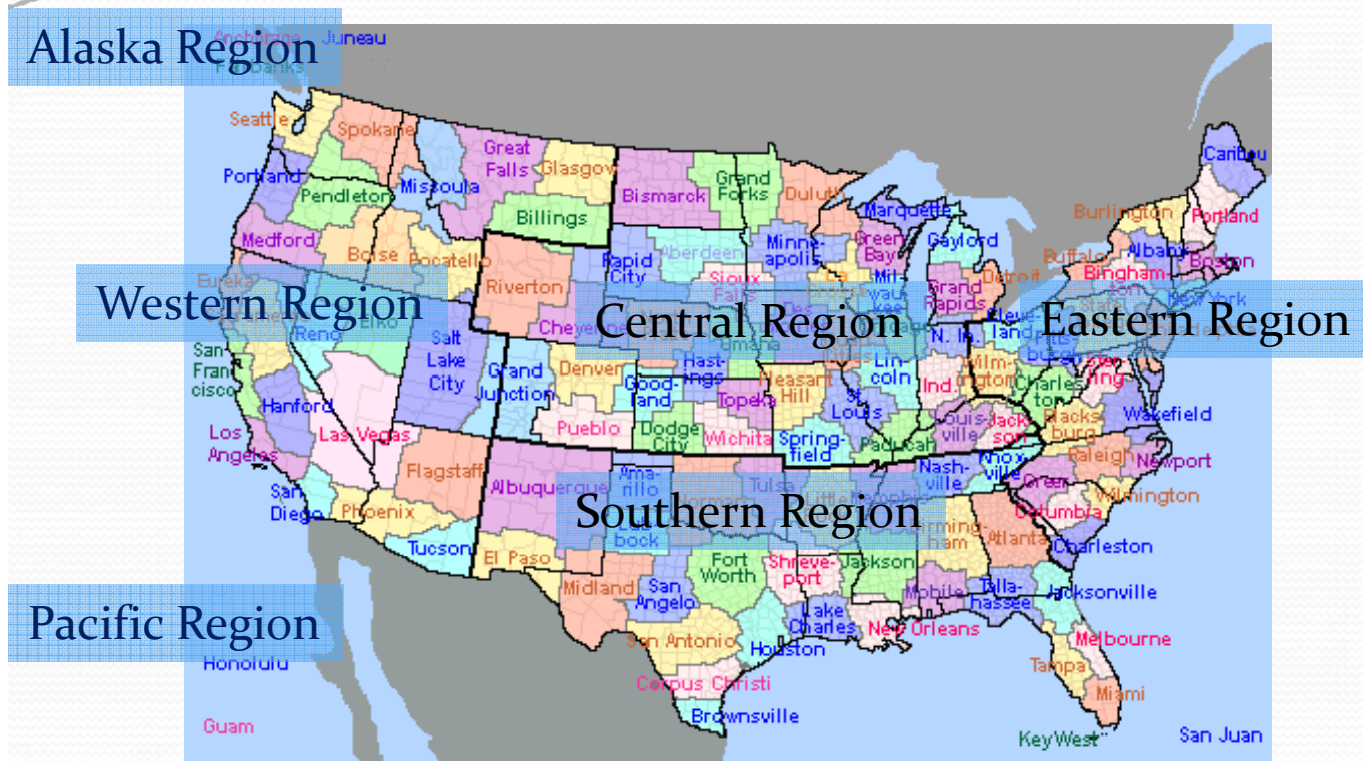


IHC & Tropical Cyclone Research Forum
Invited Presentation



StormCenter
COMMUNICATIONS, INC.

Collaboration Across NWS



Collaboration Enabled

National Centers
National-Regional
Regional Collaboration
Regional-WFO
WFO-County EOC
National Centers-WFO
NHC-Carib Islands
NHC-Hurr Hotline
Training
Deployment of ERS
Remote Support
Research to Ops-Models

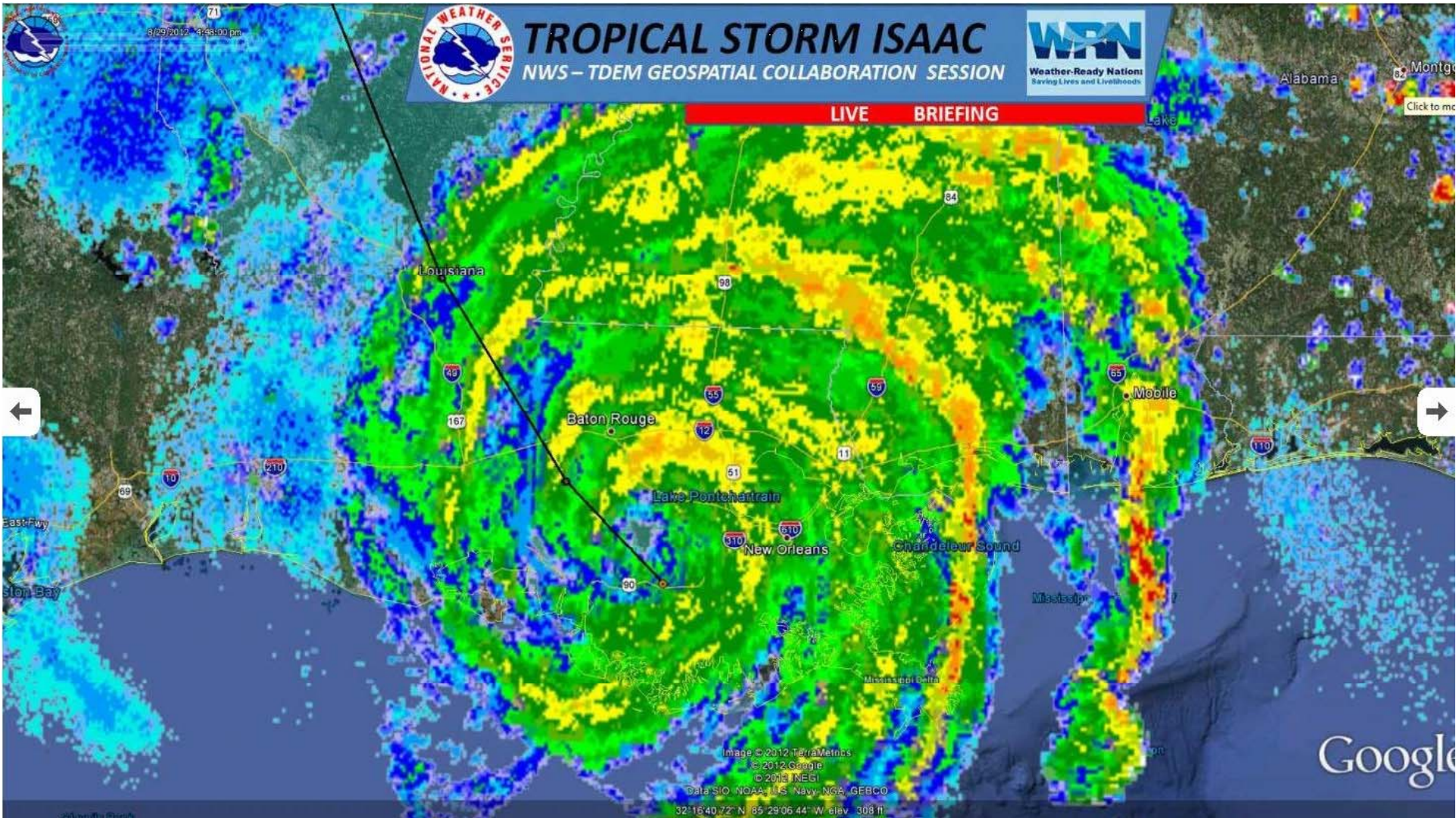
IHC & Tropical Cyclone Research Forum
Invited Presentation

StormCenter
COMMUNICATIONS, INC.

Cross-Agency Collaboration Examples

Real-Time Geospatial Collaboration in a Cloud Cyber-Infrastructure Can Enable:

- Cross-Agency data sharing for improved understanding of events, processes, interactions, impacts
- Connecting Federal Agencies to States / Federal Agencies Vertically / International
 - Joint Product creation (i.e. Volcanic Ash Collaborative Coordination)
 - New way to deliver NHC products & data to International Partners
- NWS-FEMA-USACE-USGS-DoD – Data sharing in a secure environment, including classified
- NASA-NWS NHC-WFOs – NASA HS₃ Data to NHC, NCEP
- Acceleration of science data into state EM EOCs (Tsunamis Warning, Aviation, H. Security)
- Federal Agency data to be accessed and used for decision making by multiple locations
- Scientist to scientist – data sharing for discussion and accelerated
- NSF – NWS for improved Visiting Scientist Program (Tuesday Dr. Michael Morgan)
- NSF ability to enable PI sharing of geospatial data and information (Ramamurthy)



TROPICAL STORM ISAAC

NWS – TDEM GEOSPATIAL COLLABORATION SESSION



LIVE BRIEFING



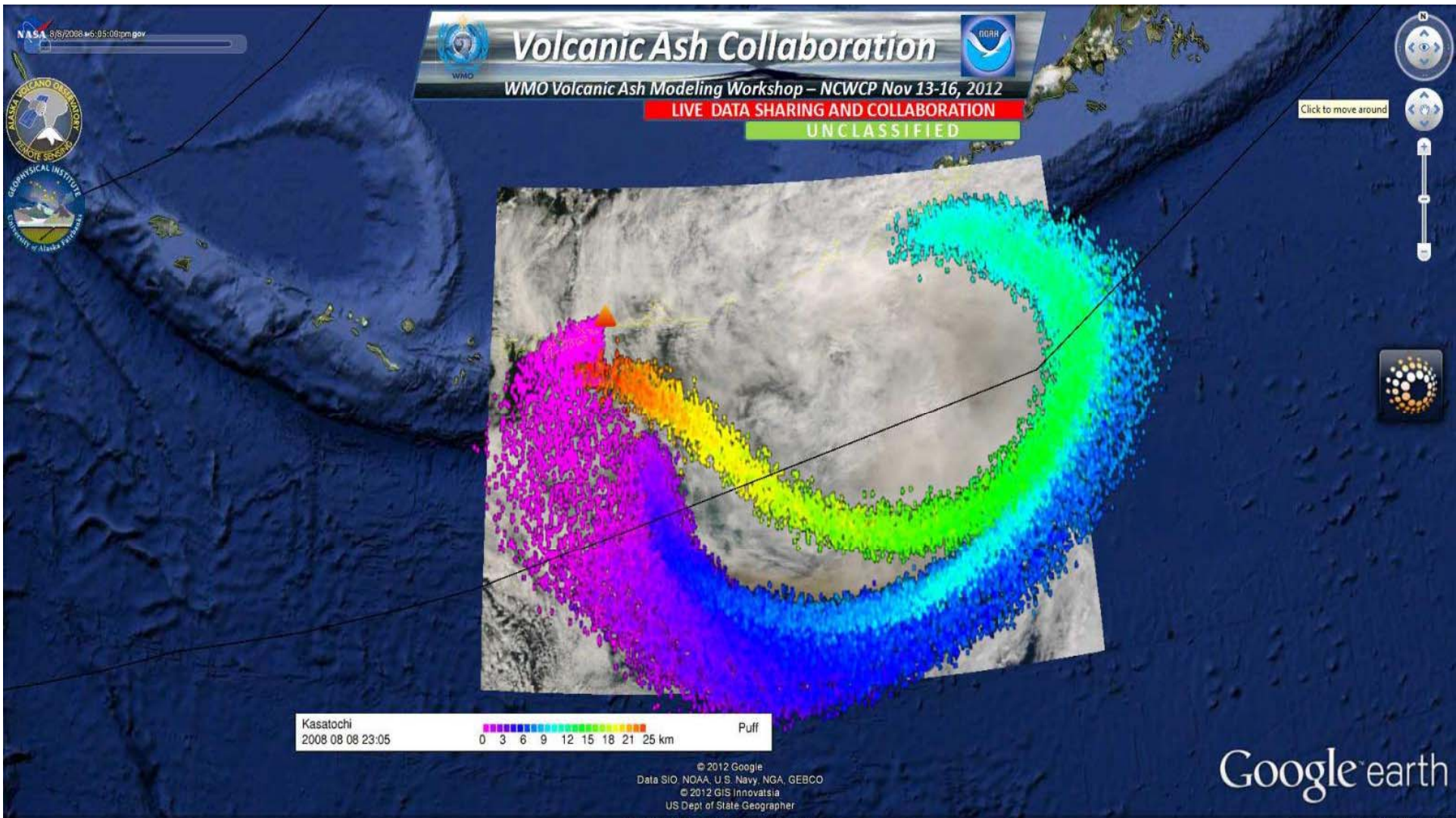
East Fwy
Baton Bay

Alabama
Montgomery
Click to map

Image © 2012 TerraMetrics
© 2012 Google
© 2012 NCEI
Data SIO, NOAA, U.S. Navy, NGA, GEBCO
32°16'40.72" N 85°29'06.44" W elev. 308 ft

Google







Joint Sea-Ice Briefing

EVCM-G Data Sharing Demonstration - Alaska Region



LIVE DATA SHARING AND COLLABORATION

UNCLASSIFIED

Click to move around





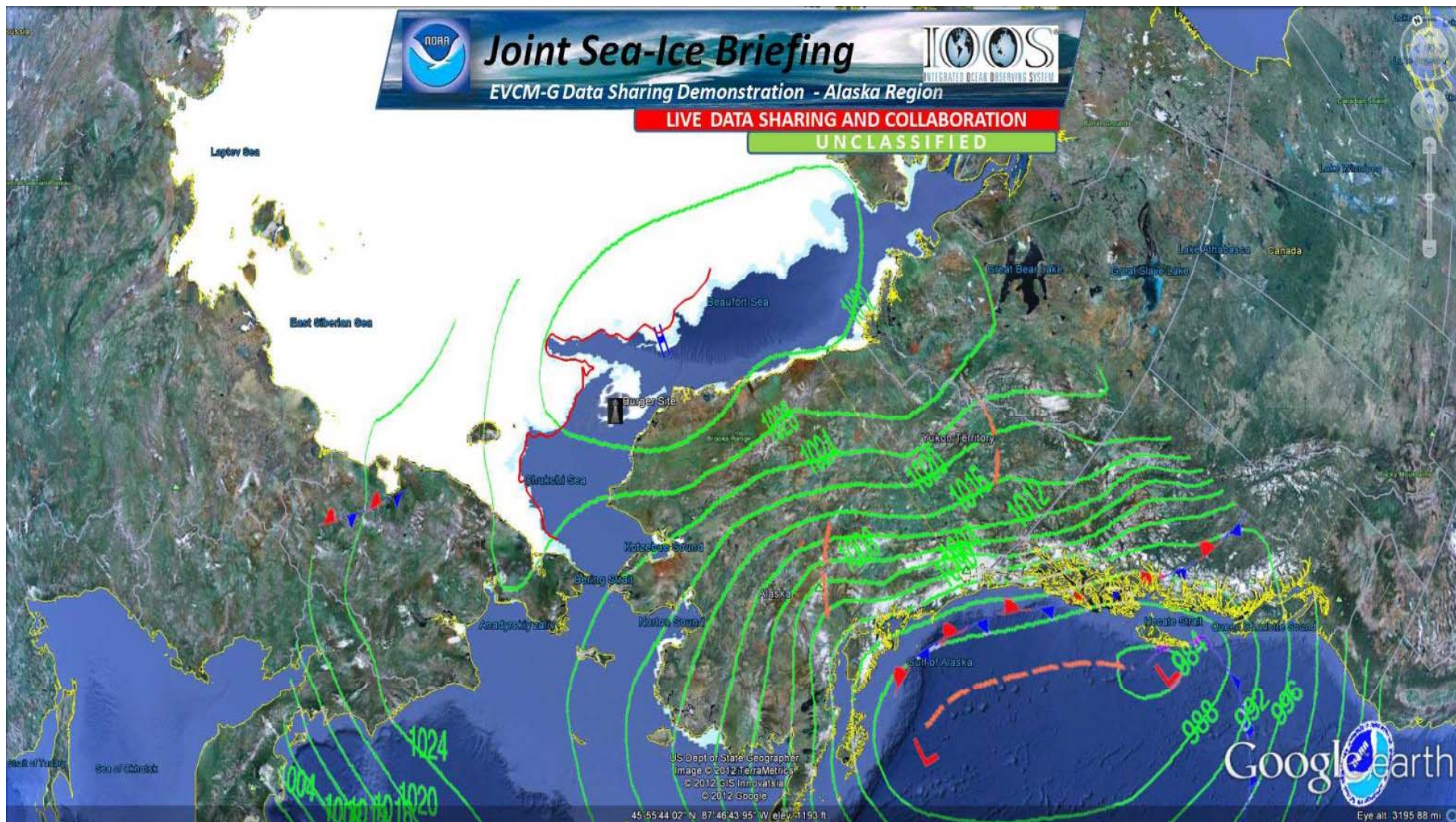
Joint Sea-Ice Briefing

EVCM-G Data Sharing Demonstration - Alaska Region



LIVE DATA SHARING AND COLLABORATION

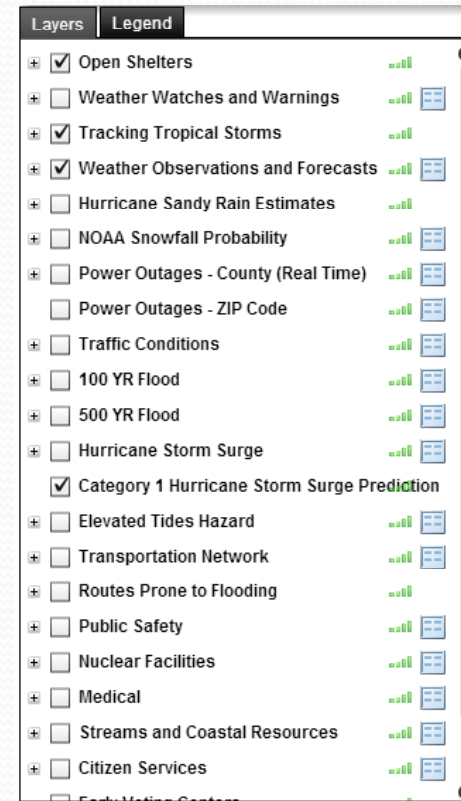
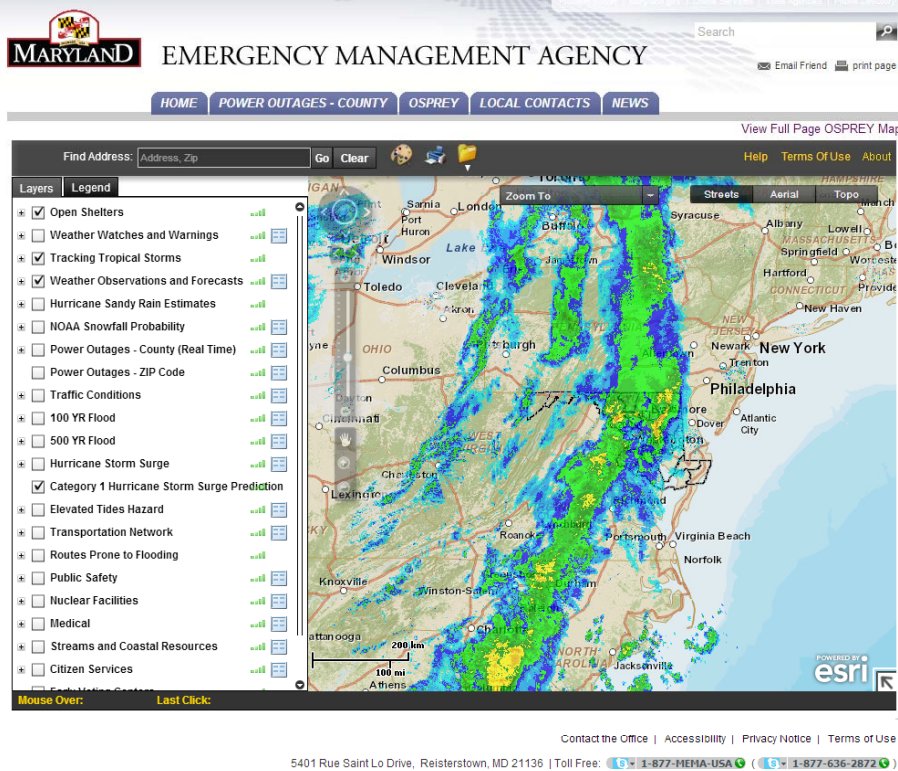
UNCLASSIFIED



US Dept of State Geographer
Image © 2012 TerraMetrics
© 2012 GIS Innovations
© 2012 Google

45° 55' 44.02" N 87° 46' 43.95" W elev: 1193 ft

Flex Viewer & GeoCollaborate™

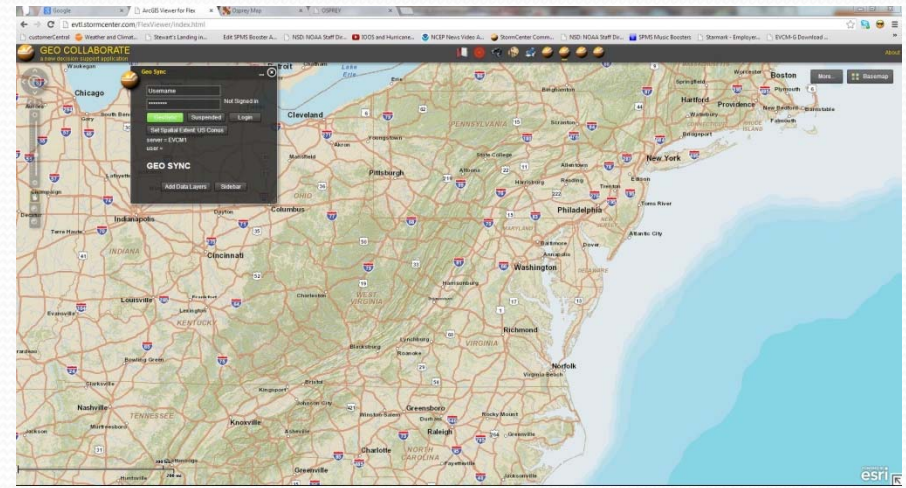
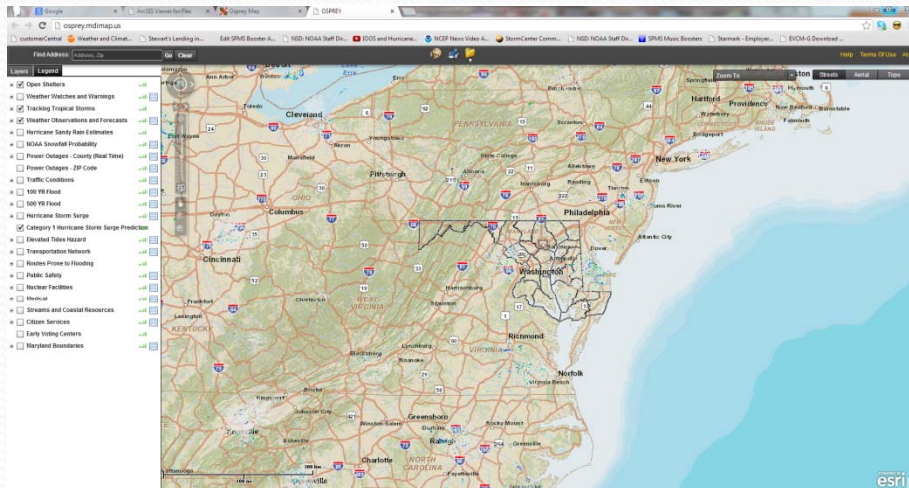


IHC & Tropical Cyclone Research Forum
Invited Presentation

StormCenter
COMMUNICATIONS, INC.

Flex Viewer & GeoCollaborate

Flex Viewer Technology – Pervasive through many state EOCs



IHC & Tropical Cyclone Research Forum
Invited Presentation



StormCenter selected as the Federal Government's Preferred Provider of Geospatial Collaboration Technologies

Sole Source contract vehicle to implement geospatial collaboration within ANY Federal Agency – No Ceiling, No Timeframe, Sub-contracting allowed

This SBIR vehicle lowers the procurement process by 10-24 months

Thank You.

Dave Jones (dave@stormcenter.com)



IHC & Tropical Cyclone Research Forum
Invited Presentation

Maryland's 2012 Technology Incubator
Company of the Year for Cyber and Homeland Security

StormCenter
COMMUNICATIONS, INC.