

Review of the 2011 Central Pacific Tropical Cyclone Season and Verification

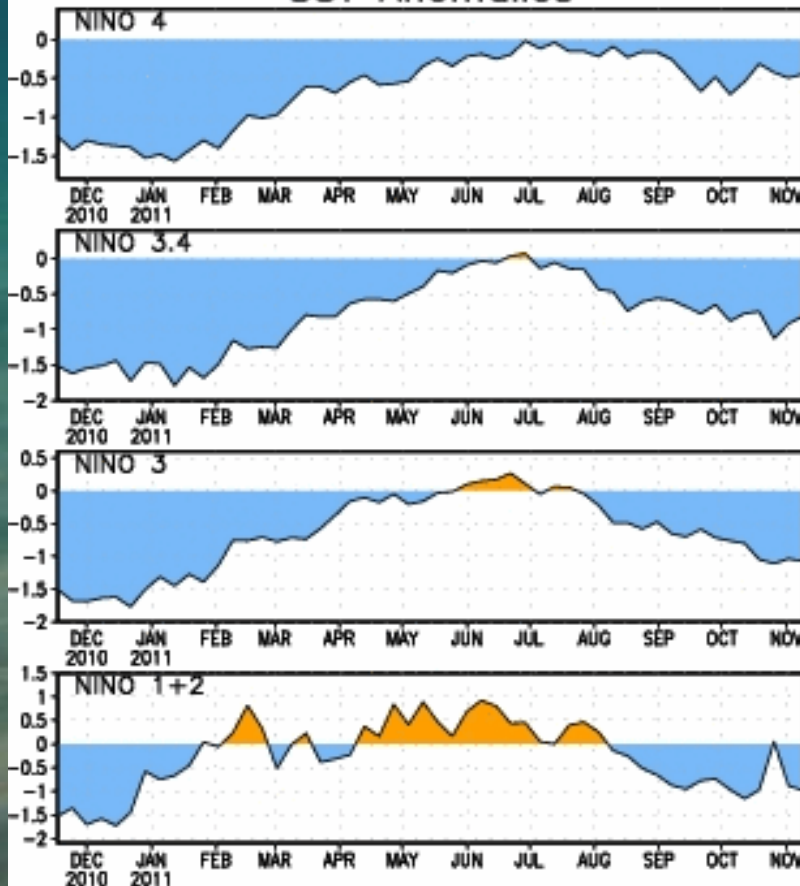
**National Weather Service
Central Pacific Hurricane Center
Honolulu, Hawaii**

**Raymond Tanabe
CPHC**

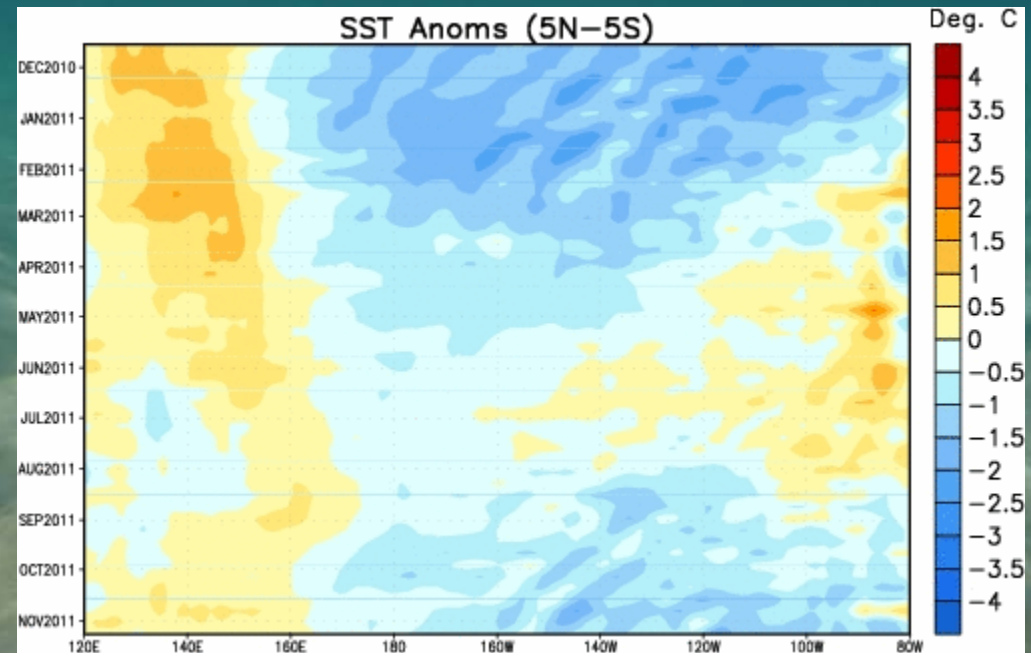
**Interdepartmental Hurricane Conference
March 2012**

Ongoing Neutral/La Nina Conditions Kept Pacific Cool for the 2011 Tropical Cyclone Season

SST Anomalies



SST Anoms (5N-5S)

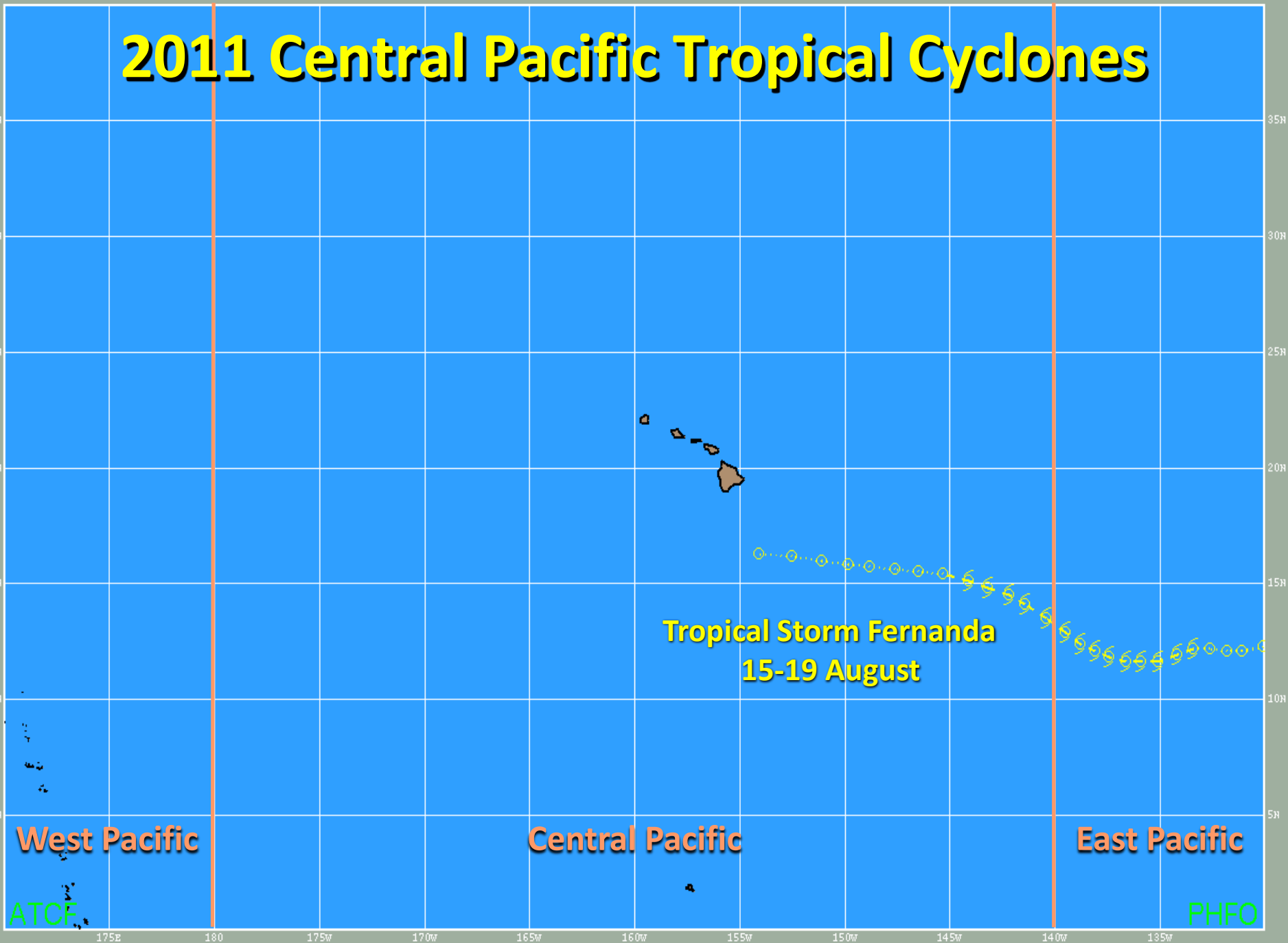


Tropical Storm Fernanda

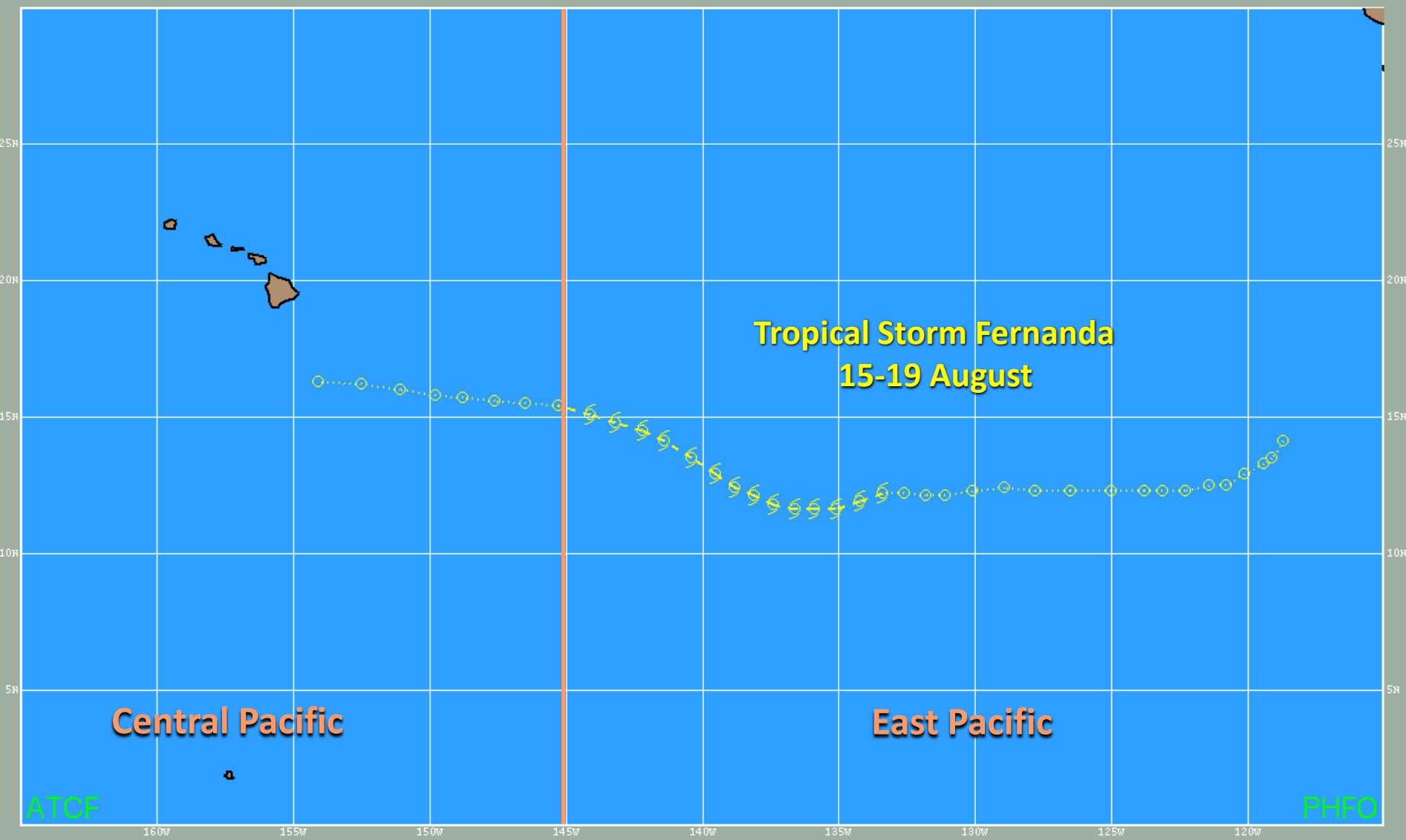
August 15-19

- Formed in Eastern Pacific on August 15.
- Crossed into Central Pacific on August 18.
- Max intensity 55 kt on August 17-18
- 6 tropical cyclone forecast packages issued by CPHC.

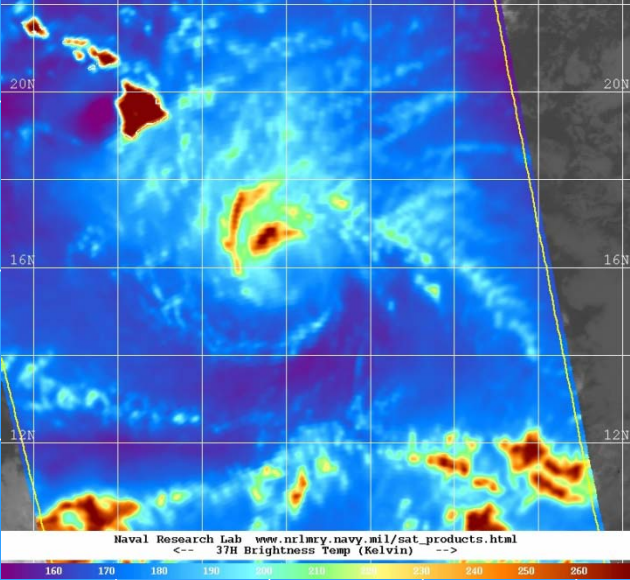
2011 Central Pacific Tropical Cyclones



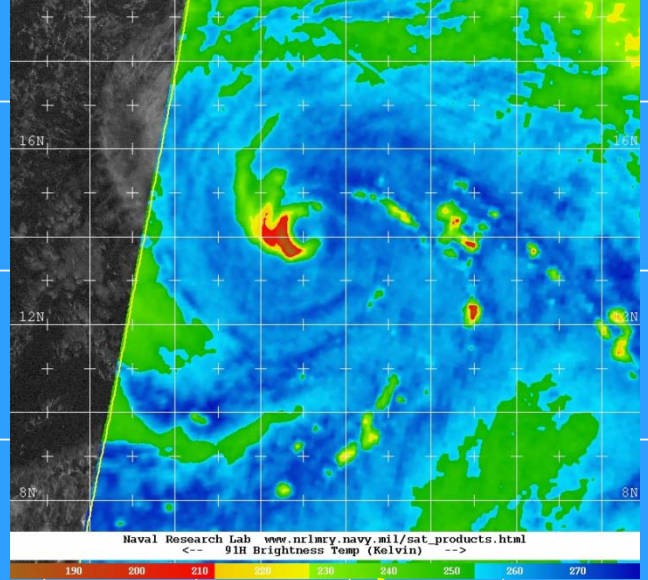
2011 Central Pacific Tropical Cyclones



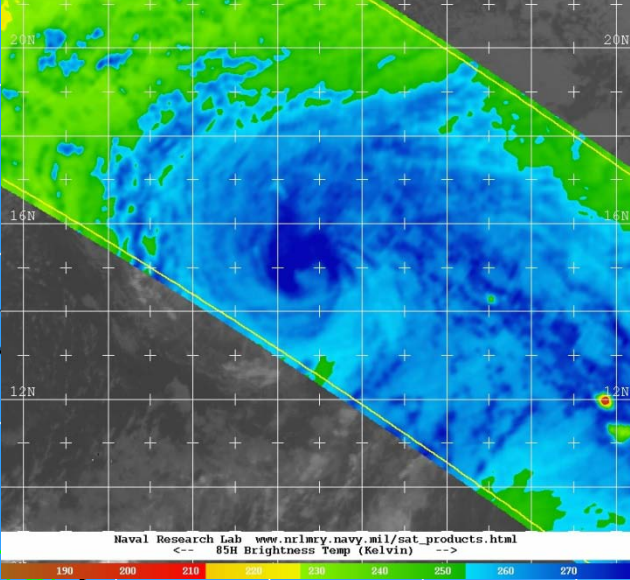
08/21/11 0002Z 06E FERNANDA
08/21/11 0357Z WindSat 37H
08/21/11 0330Z GOES-11 IR



08/18/11 1200Z 06E FERNANDA
08/18/11 1533Z F-16 91H
08/18/11 1600Z GOES-11 VIS



08/19/11 0600Z 06E FERNANDA
08/19/11 0648Z TRMM 85H
08/19/11 0630Z GOES-11 IR

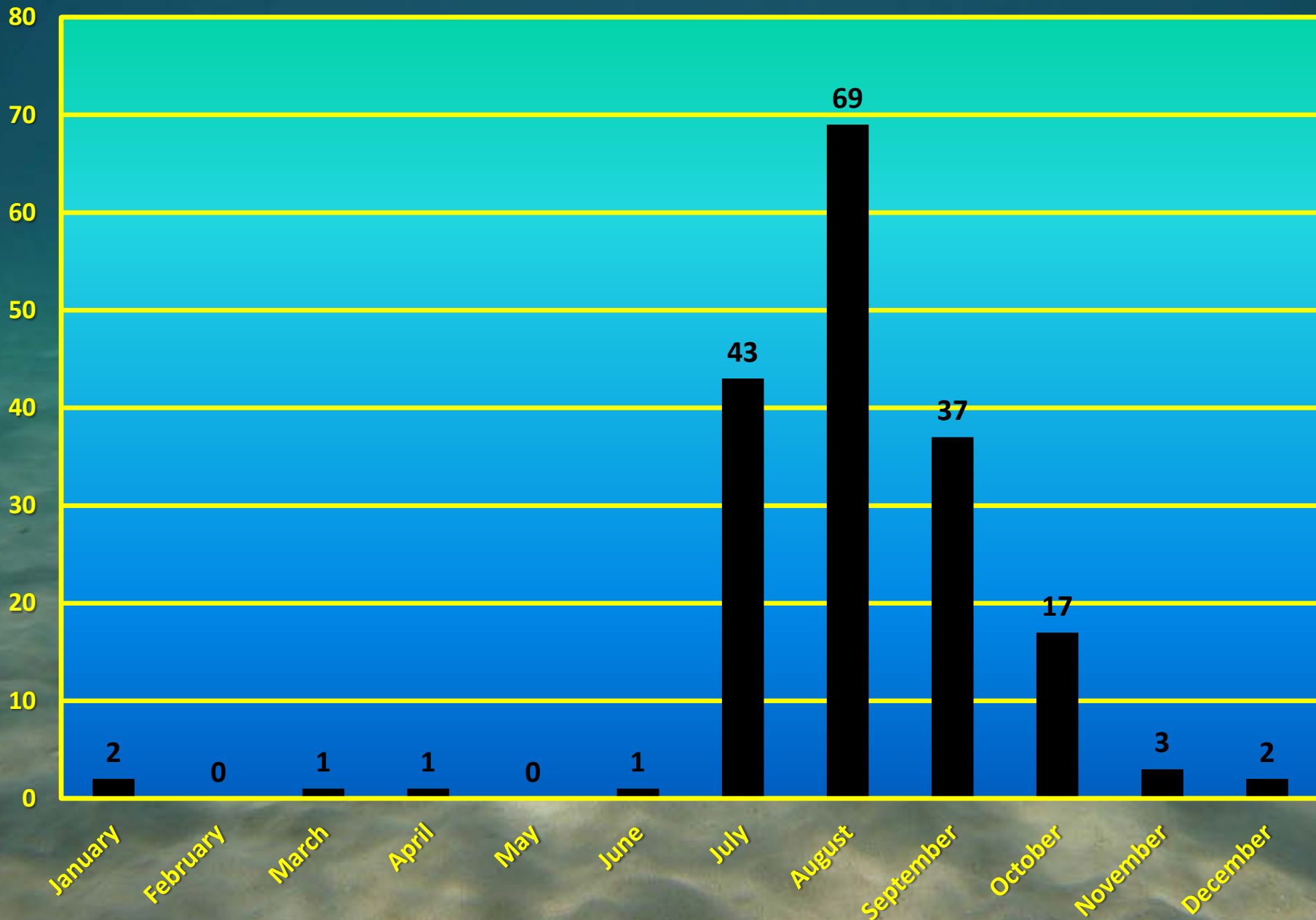


Tropical Storm Fernanda 15-19 August

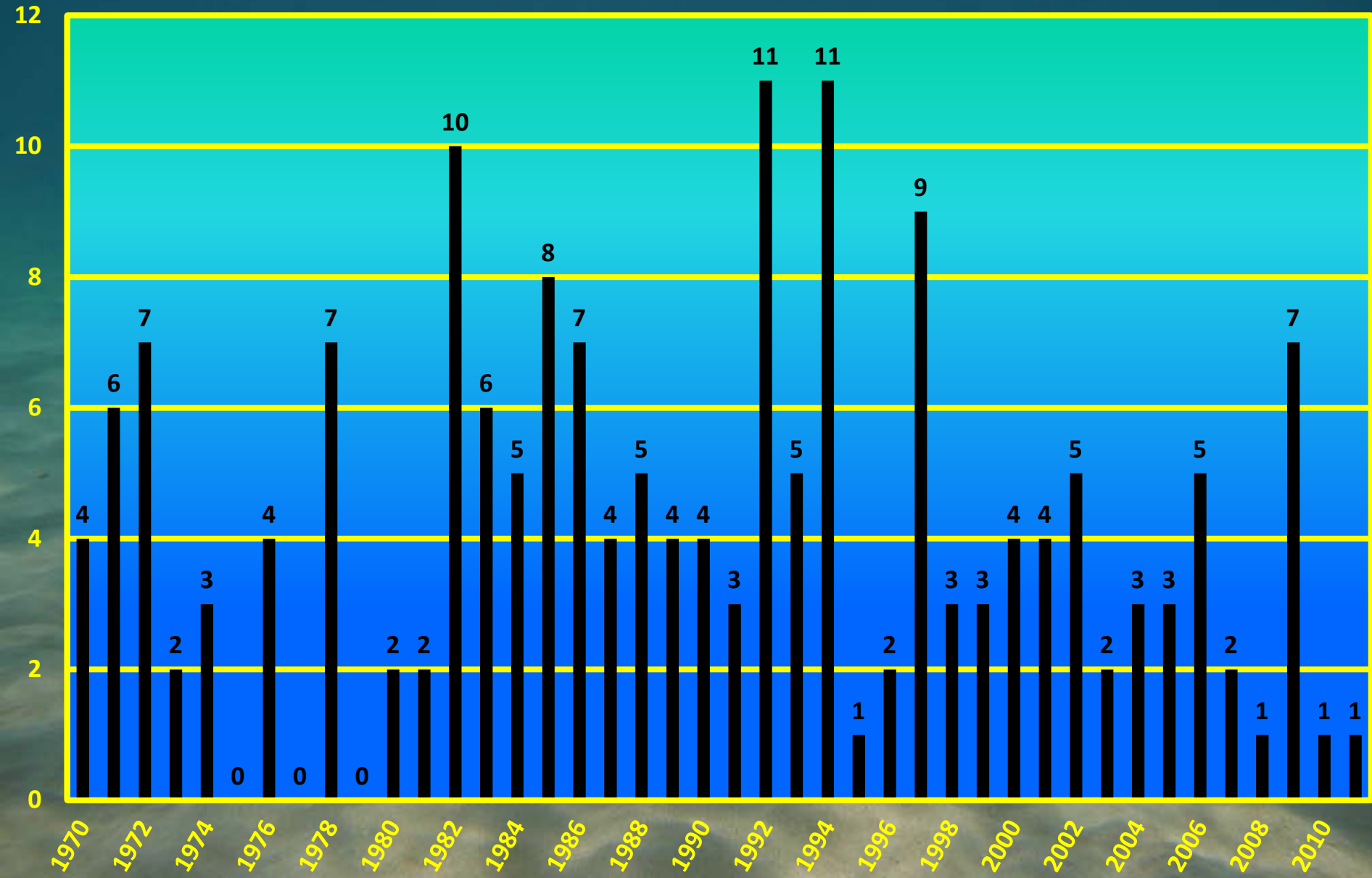
Central Pacific Tropical Cyclone Season

- **Central Pacific Average per Year**
 - 4-5 Tropical Cyclones
- **1970 to 2011: 176 Tropical Cyclones**
 - 37% Hurricanes, 20% Tropical Storms,
33% Tropical Depressions

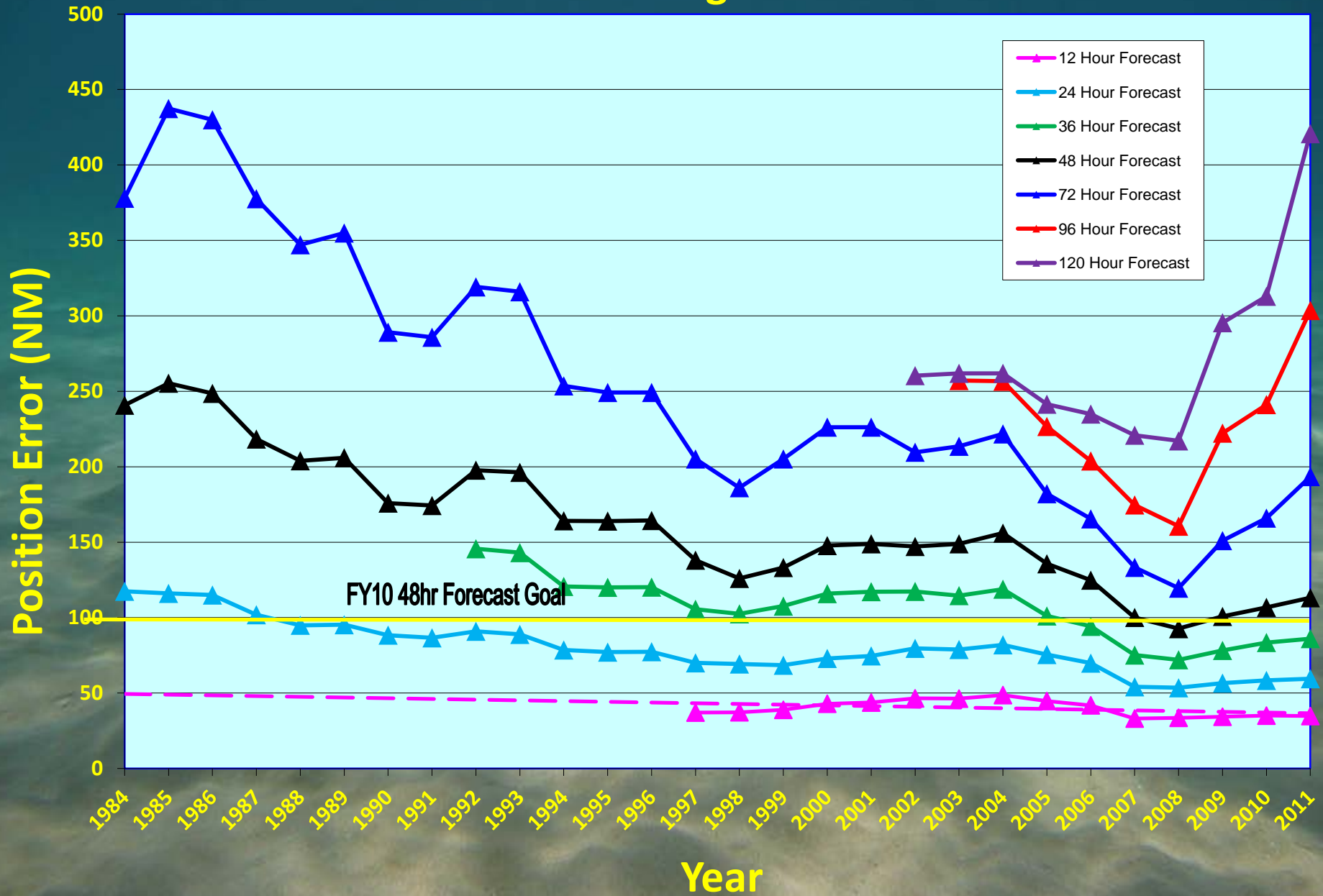
Central Pacific Tropical Cyclones 1970-2011



Central Pacific Tropical Cyclones 1970-2011



CPHC Tropical Cyclone Track Forecast Five Year Running Mean Error



Tropical Storm Mike

Formed over Caribou, Maine

Tracked SSW to Hawaii

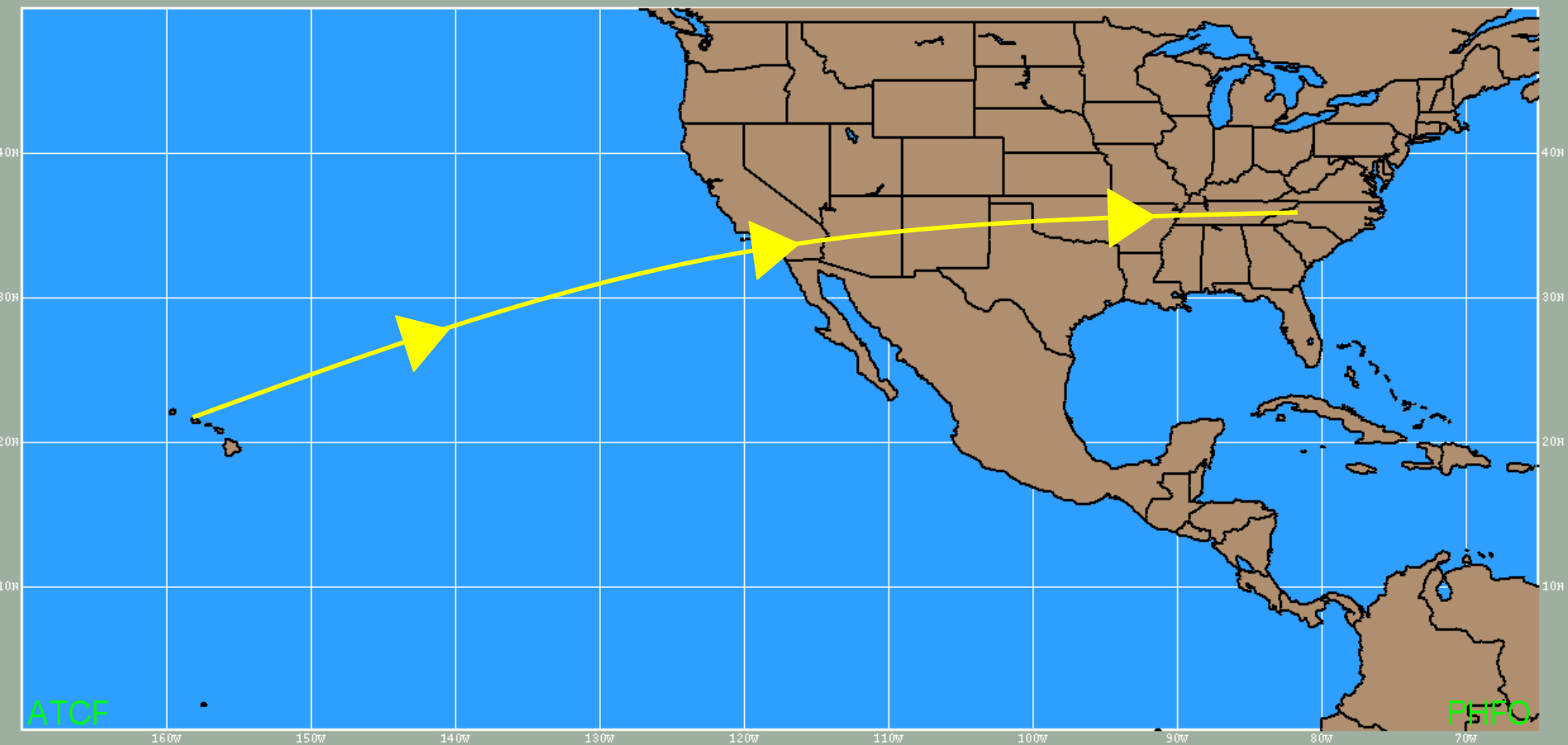


Mike Cantin started as the new WCM on January 1, 2011.
Mike was the WCM at WFO Caribou
michael.cantin@noaa.gov



Hurricane Jim

Peaked in intensity over Hawaii
Tracked ENE and retired in N. Carolina



**Jim Weyman retired on March 31, 2011 after
14 years as CPHC Director
Jim and Linda moved to North Carolina
hiammic@gmail.com**





**Ray Tanabe promoted(?) to MIC of WFO
Honolulu and CPHC Director in May 2011.
raymond.tanabe@noaa.gov**



The image features a vibrant blue ocean background with gentle, rippling waves. The water transitions from a deep teal at the top to a lighter, sunlit blue near the bottom. Centered in the middle of the frame is the word "Aloha!" written in a bold, bright yellow font with a black outline. The text is clear and stands out prominently against the blue background.

Aloha !