



JOINT TYPHOON WARNING CENTER 2011 YEAR IN REVIEW



Super Typhoon Songda Destroys Kadena AB WSR-88D



66th INTERDEPARTMENTAL HURRICANE CONFERENCE

5-8 MAR 2012

CHARLESTON, SC

Mr. Robert (Bob) Falvey
Director, Joint Typhoon Warning Center

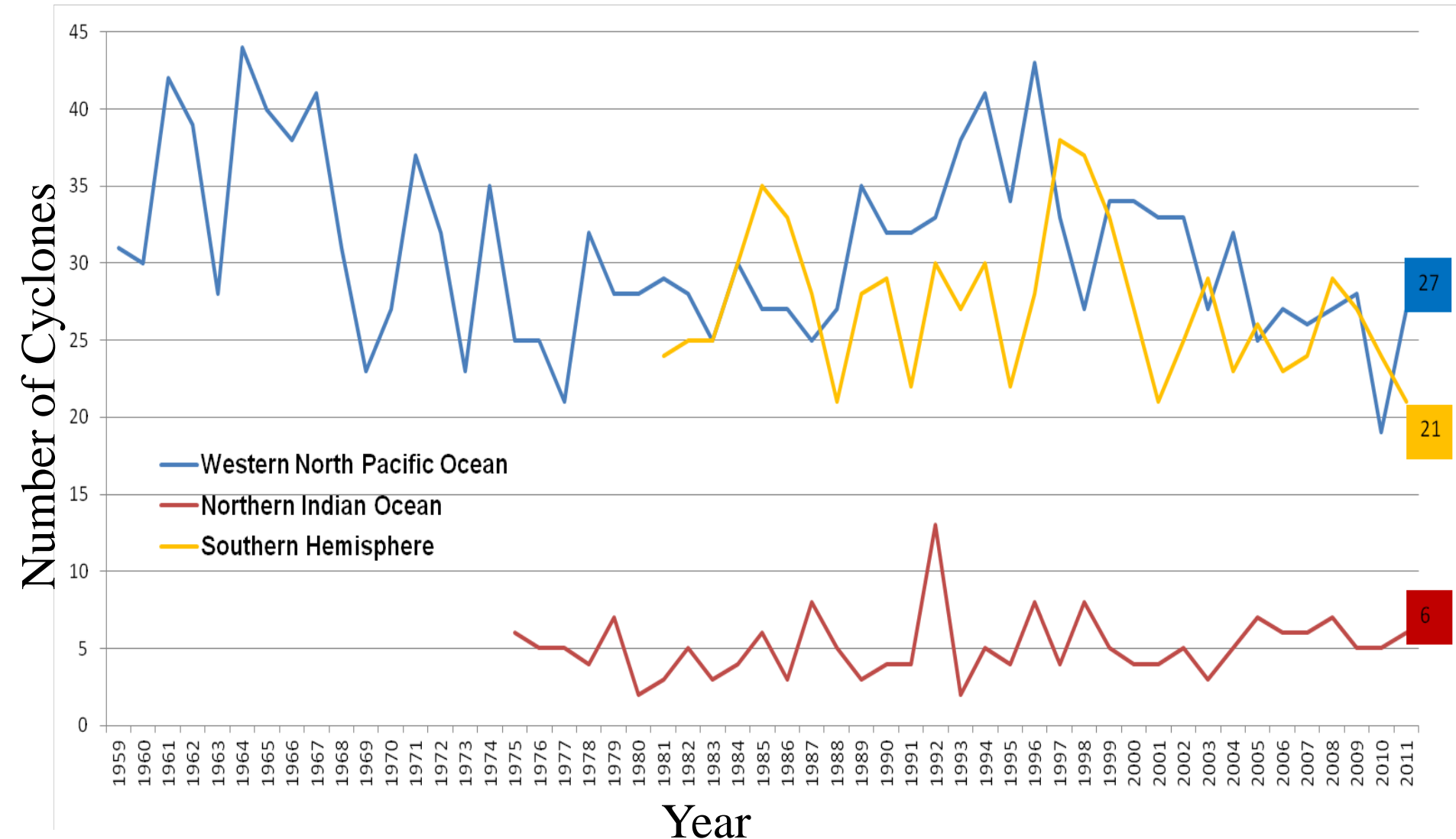


MISSION

Provide tropical cyclone reconnaissance, analysis, forecast and warning support for Department of Defense, and other US Government assets in the Pacific and Indian Oceans as established by Commander, United States Pacific Command.



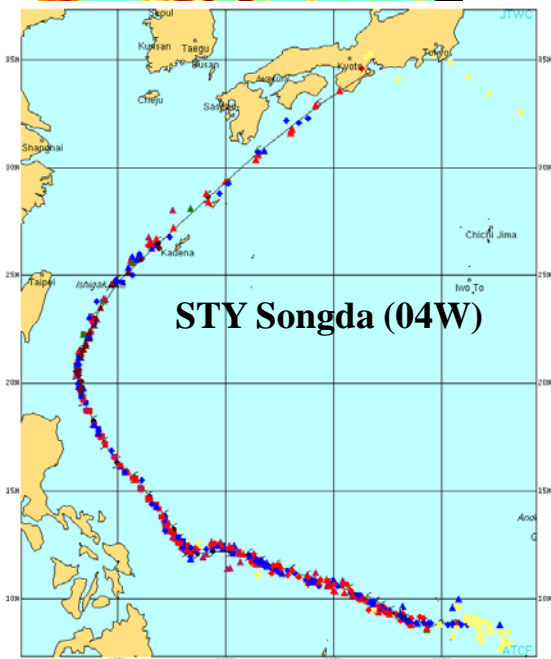
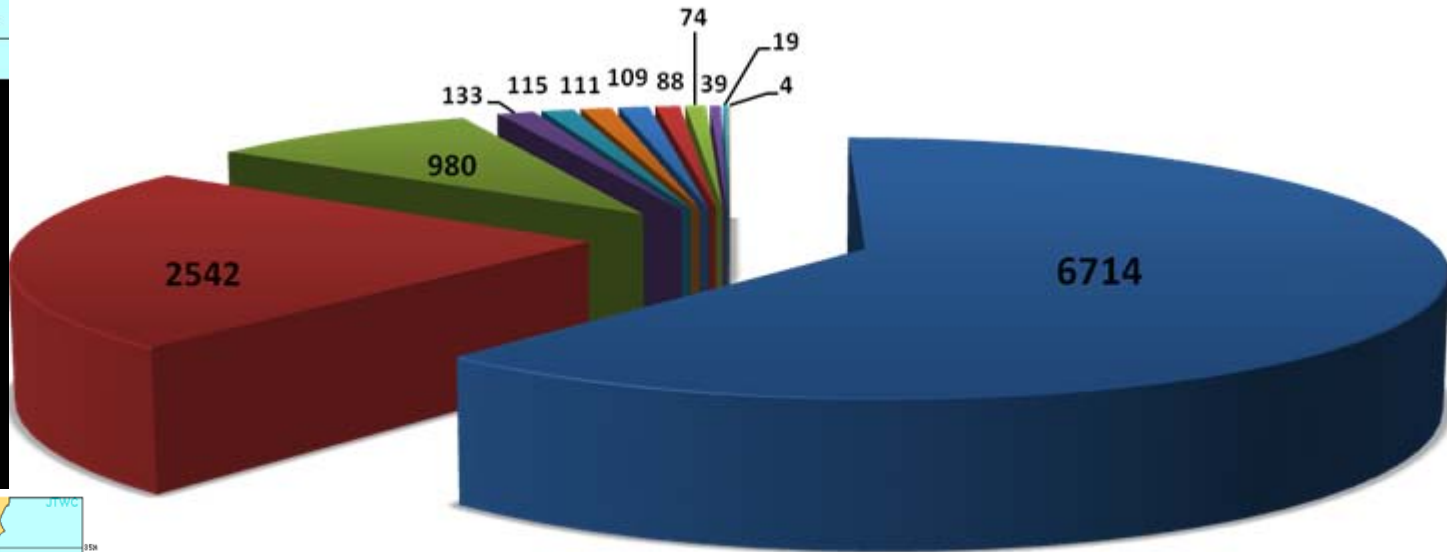
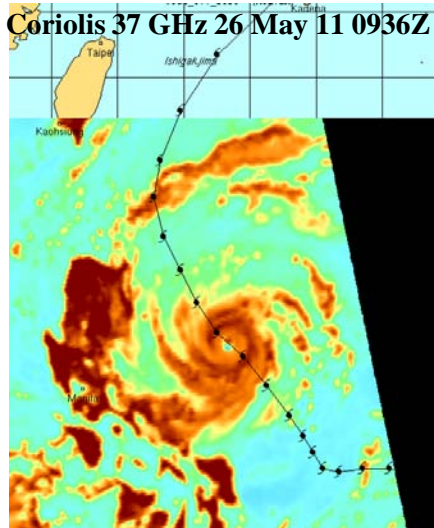
ANNUAL TC ACTIVITY (All Intensities)



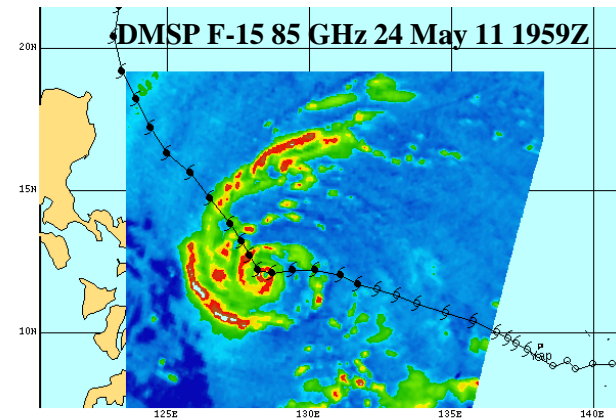
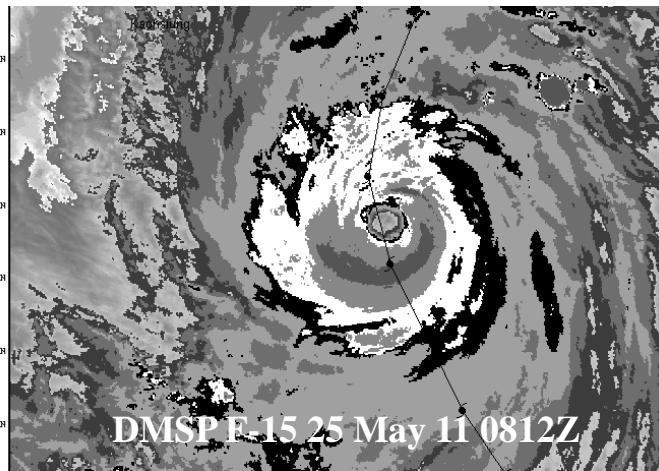


2011 SATELLITE RECON

Fixes by Agency – 10,928



- JTWC
- NESDIS
- JAPAN
- PERTH
- CPHC
- LA REUNION
- FIJI
- BRISBANE
- DARWIN
- INDIA
- NEW ZEALAND
- MAURITIUS

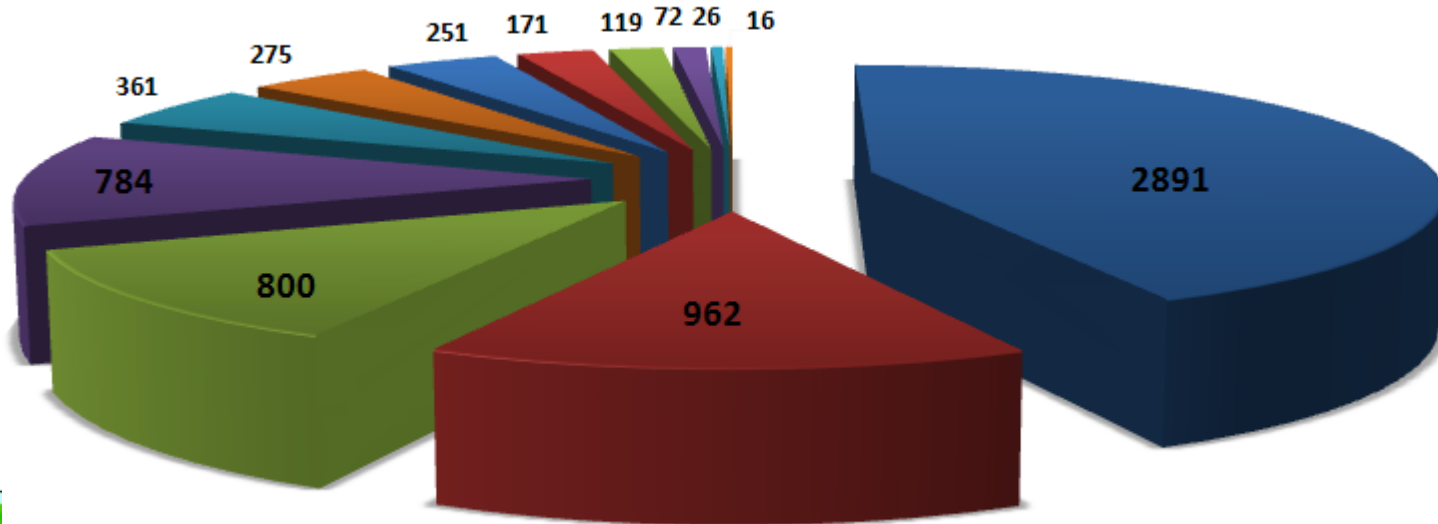




2011 SATELLITE RECON

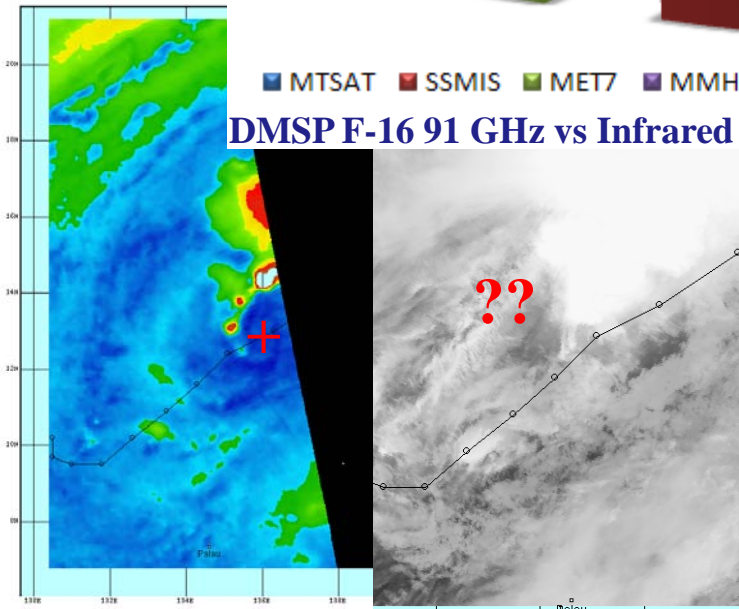
JTWC (PGTW) Fixes – 6,714

Total Microwave Fixes: 2,923 (43.5% of total)

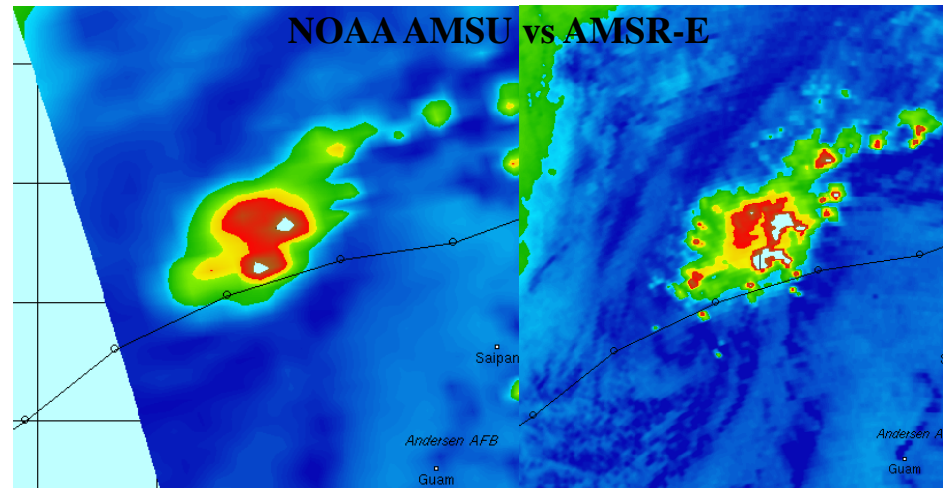


■ MTSAT
 ■ SSMIS
 ■ MET7
 ■ MMHS
 ■ TRMM
 ■ SSMI
 ■ AMSR
 ■ WIND
 ■ AMSU
 ■ ASCT
 ■ GOES
 ■ FY2D

DMSP F-16 91 GHz vs Infrared

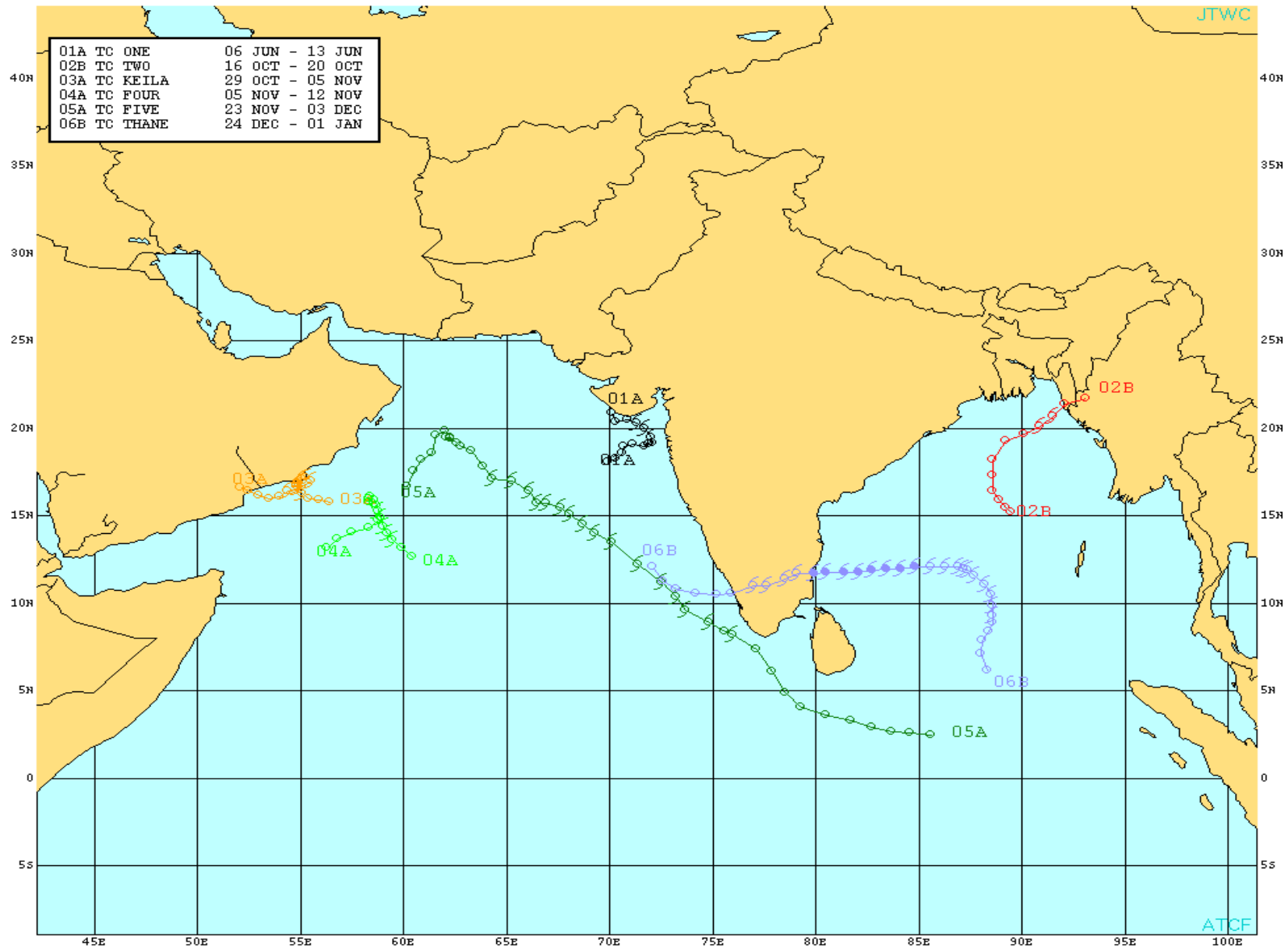


NOAA AMSU vs AMSR-E





2011 NORTH INDIAN OCEAN

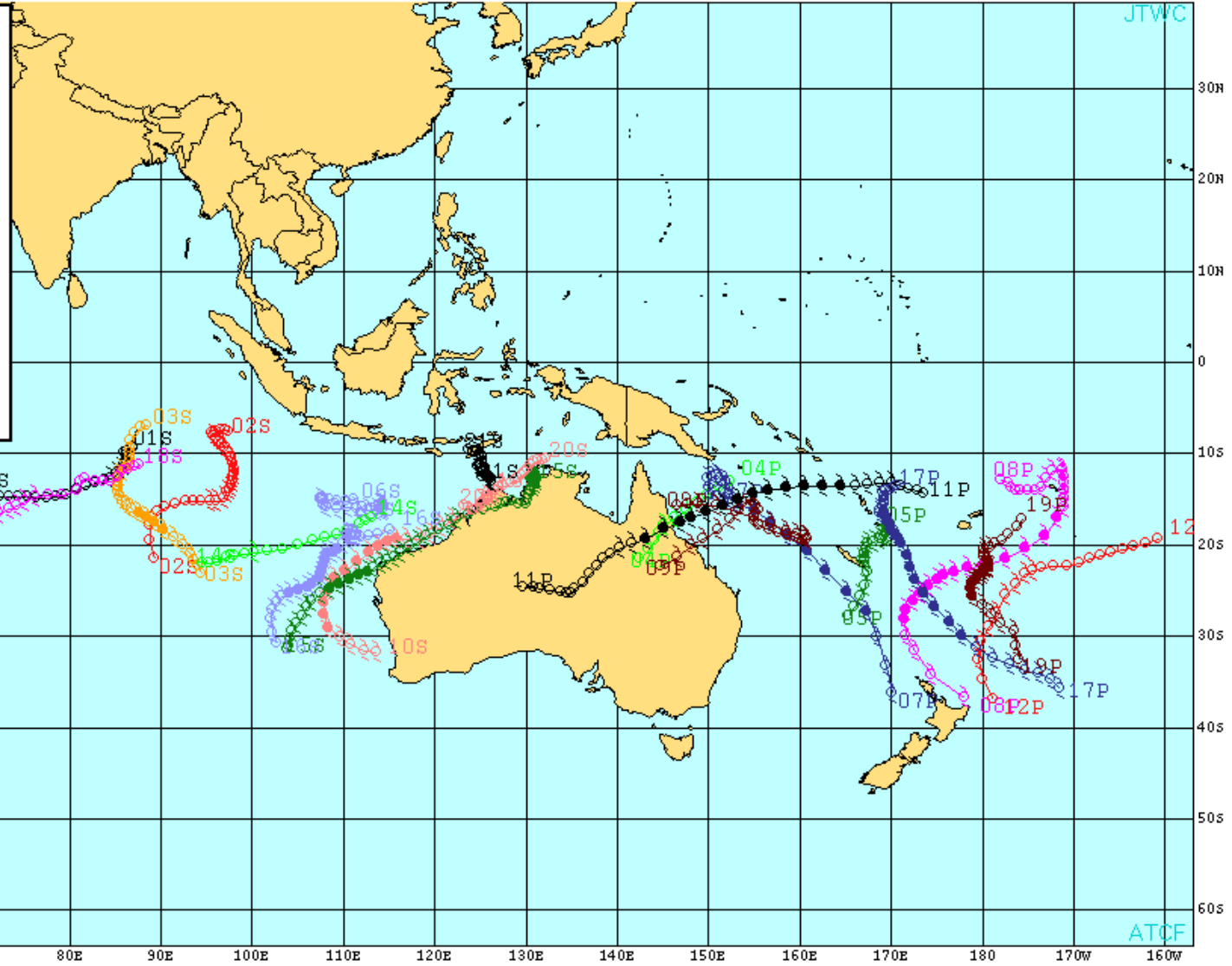




2011 SOUTHERN HEMISPHERE

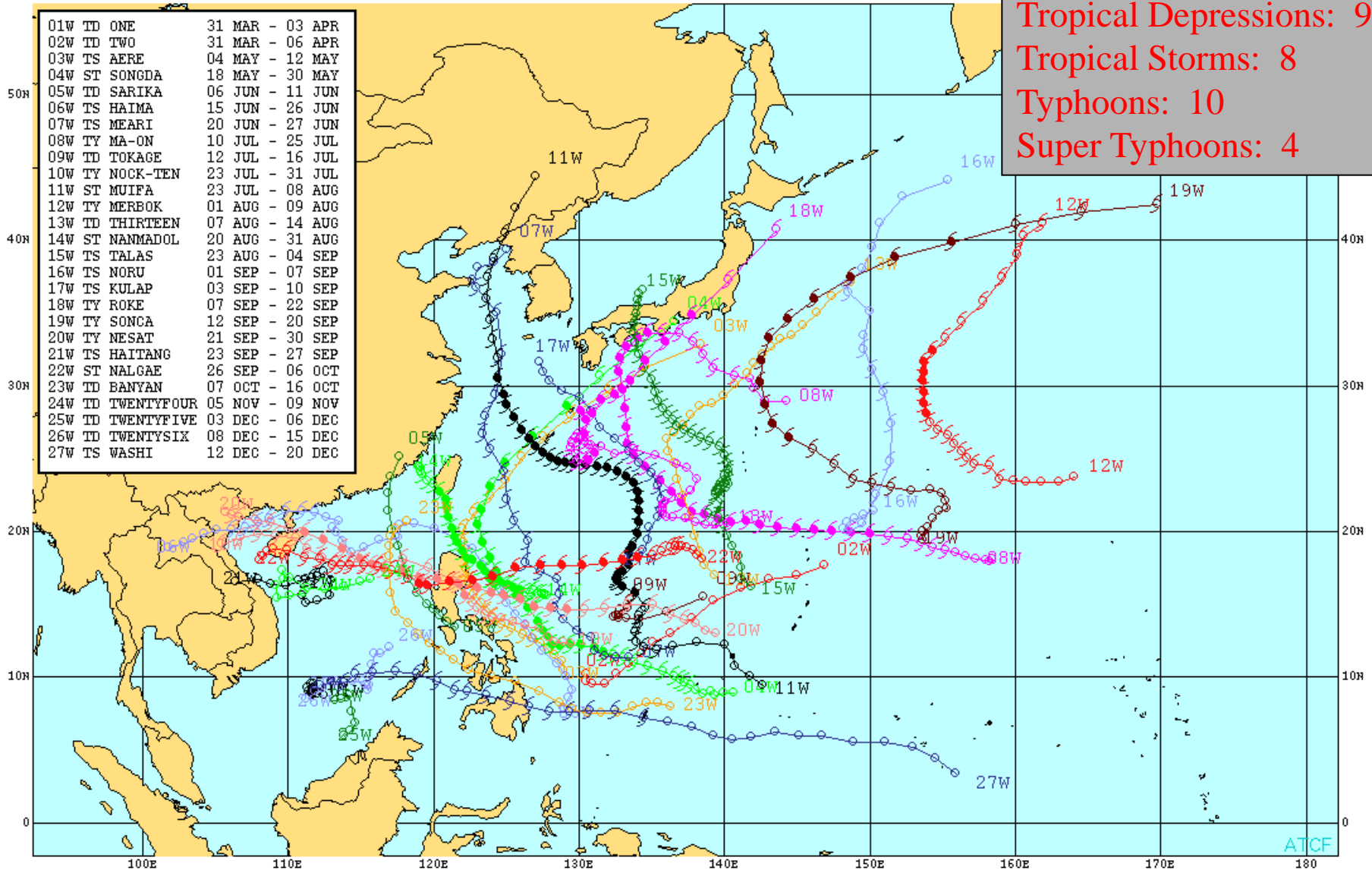


01S TC ONE	24 OCT - 30 OCT
02S TC ANGGREK	28 OCT - 05 NOV
03S TC ABELE	25 NOV - 04 DEC
04P TC TASHA	23 DEC - 26 DEC
05P TC VANIA	09 JAN - 17 JAN
06S TC VINCE	09 JAN - 17 JAN
07P TC ZELIA	12 JAN - 18 JAN
08P TC WILMA	20 JAN - 29 JAN
09P TC ANTHONY	20 JAN - 30 JAN
10S TC BIANCA	21 JAN - 30 JAN
11P TC YASI	28 JAN - 06 FEB
12P TC ZAKA	03 FEB - 08 FEB
13S TC BINGIZA	08 FEB - 18 FEB
14S TC FOURTEEN	08 FEB - 13 FEB
15S TC CARLOS	14 FEB - 26 FEB
16S TC DIANNE	14 FEB - 22 FEB
17P TC ATU	16 FEB - 25 FEB
18S TC CHERONO	13 MAR - 23 MAR
19P TC BUNE	22 MAR - 30 MAR
20S TC TWENTY	29 MAR - 05 APR
21S TC ERROL	11 APR - 20 APR





2011 WESTERN NORTH PACIFIC

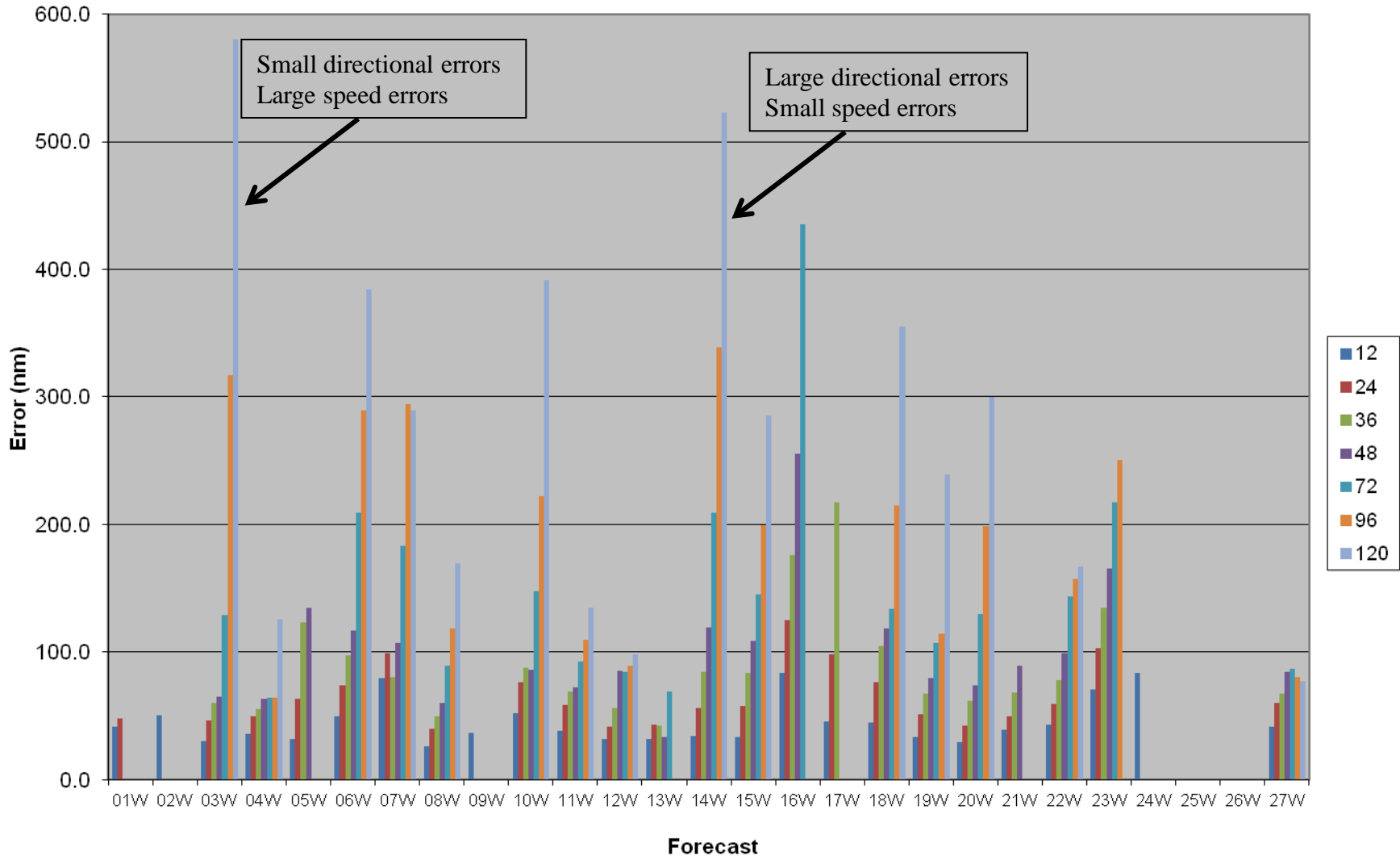




2011 WESTERN NORTH PACIFIC TRACK ERRORS



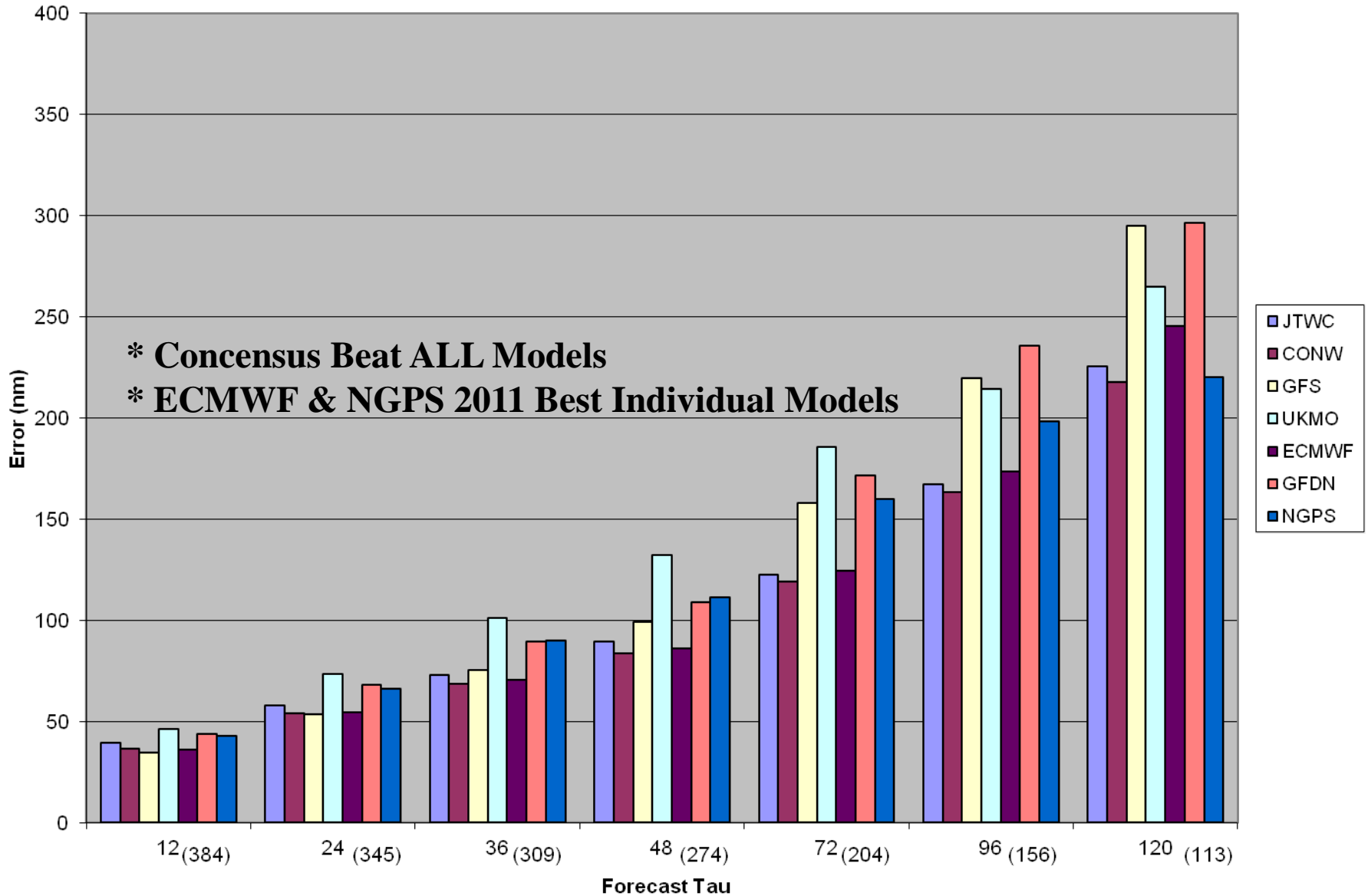
Storm by Storm





2011 MODEL TRACK ERRORS

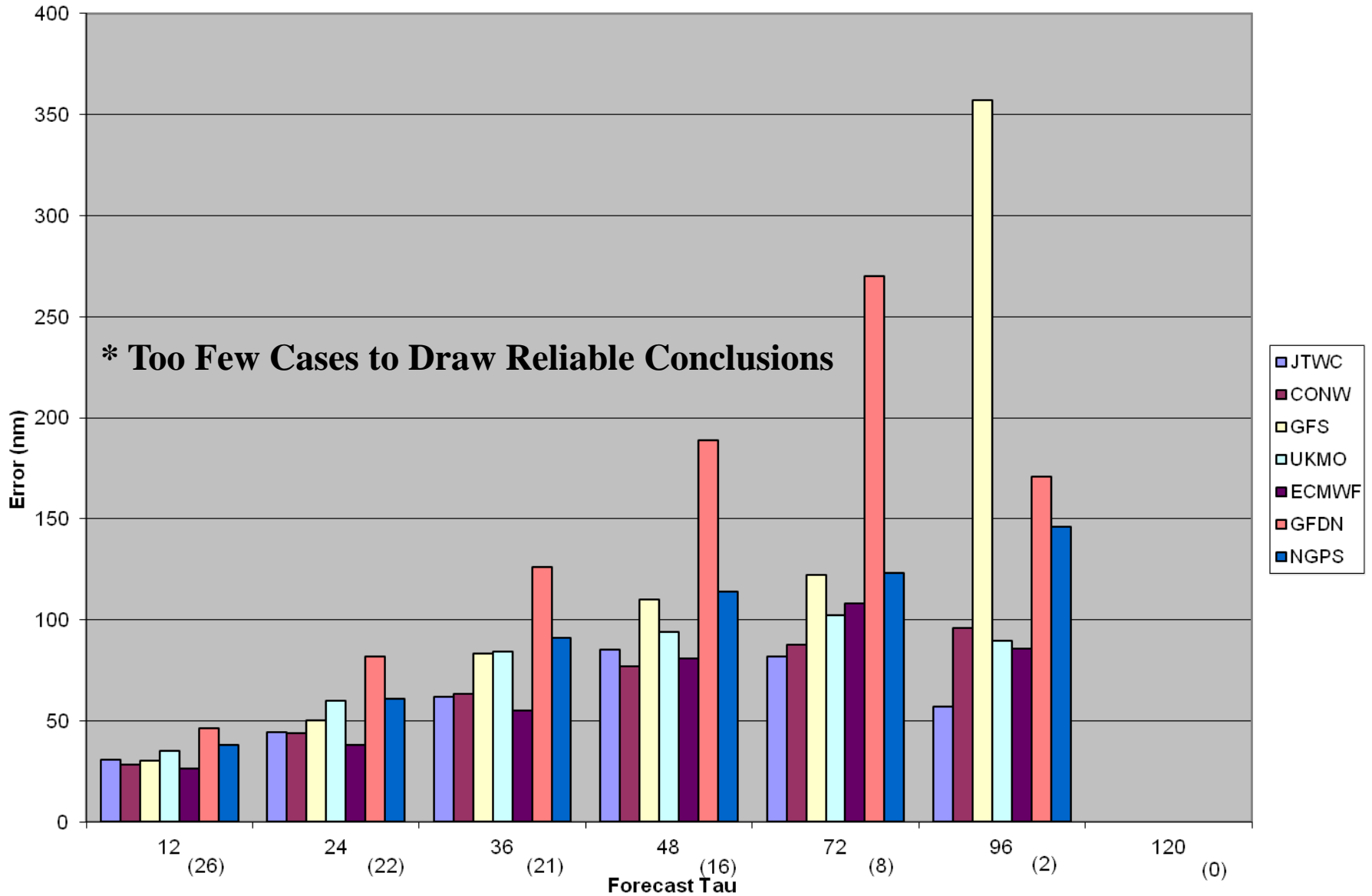
(Western North Pacific – Homogeneous)





2011 MODEL TRACK ERRORS

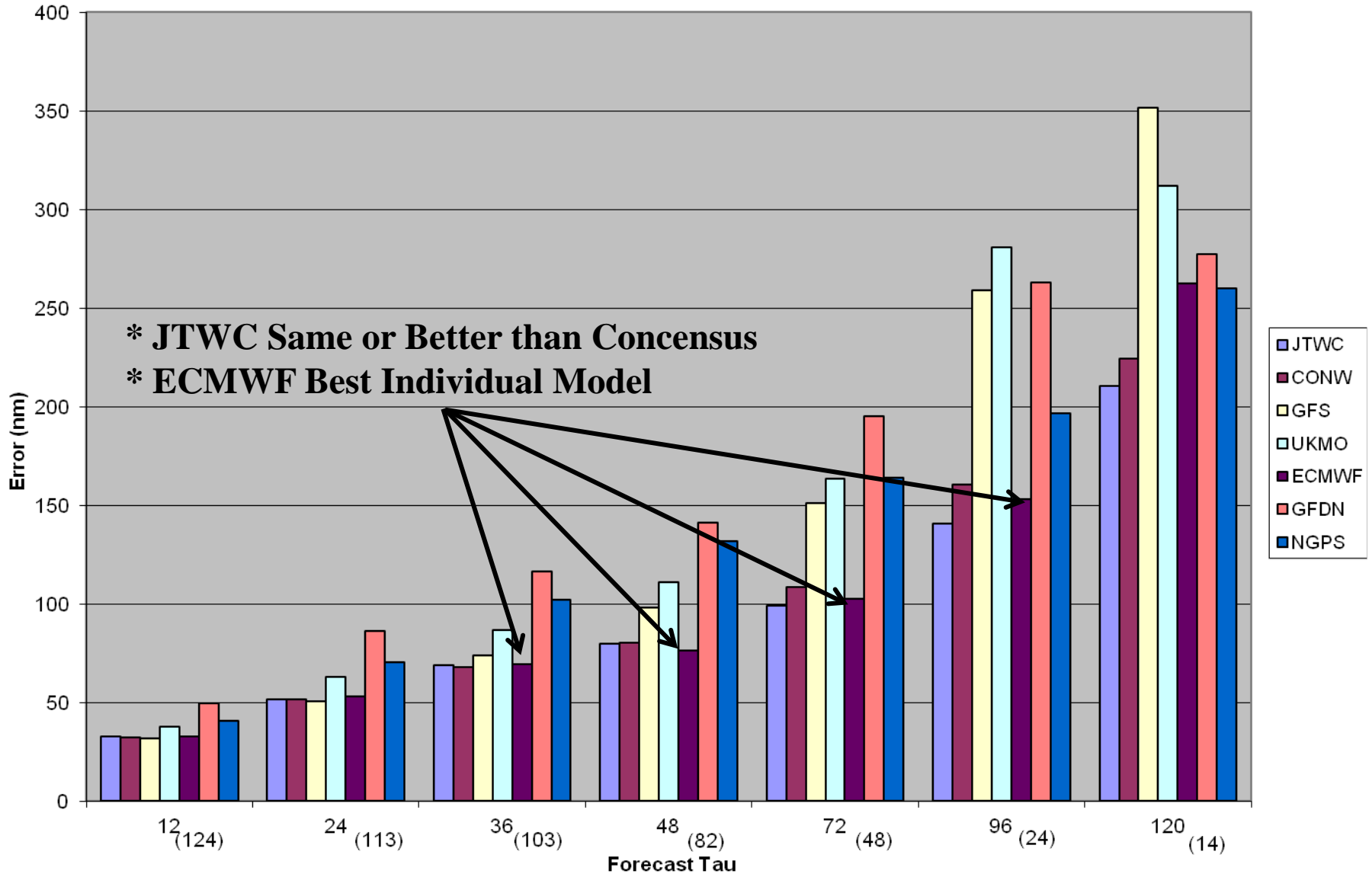
(Northern Indian Ocean – Homogeneous)





2011 MODEL TRACK ERRORS

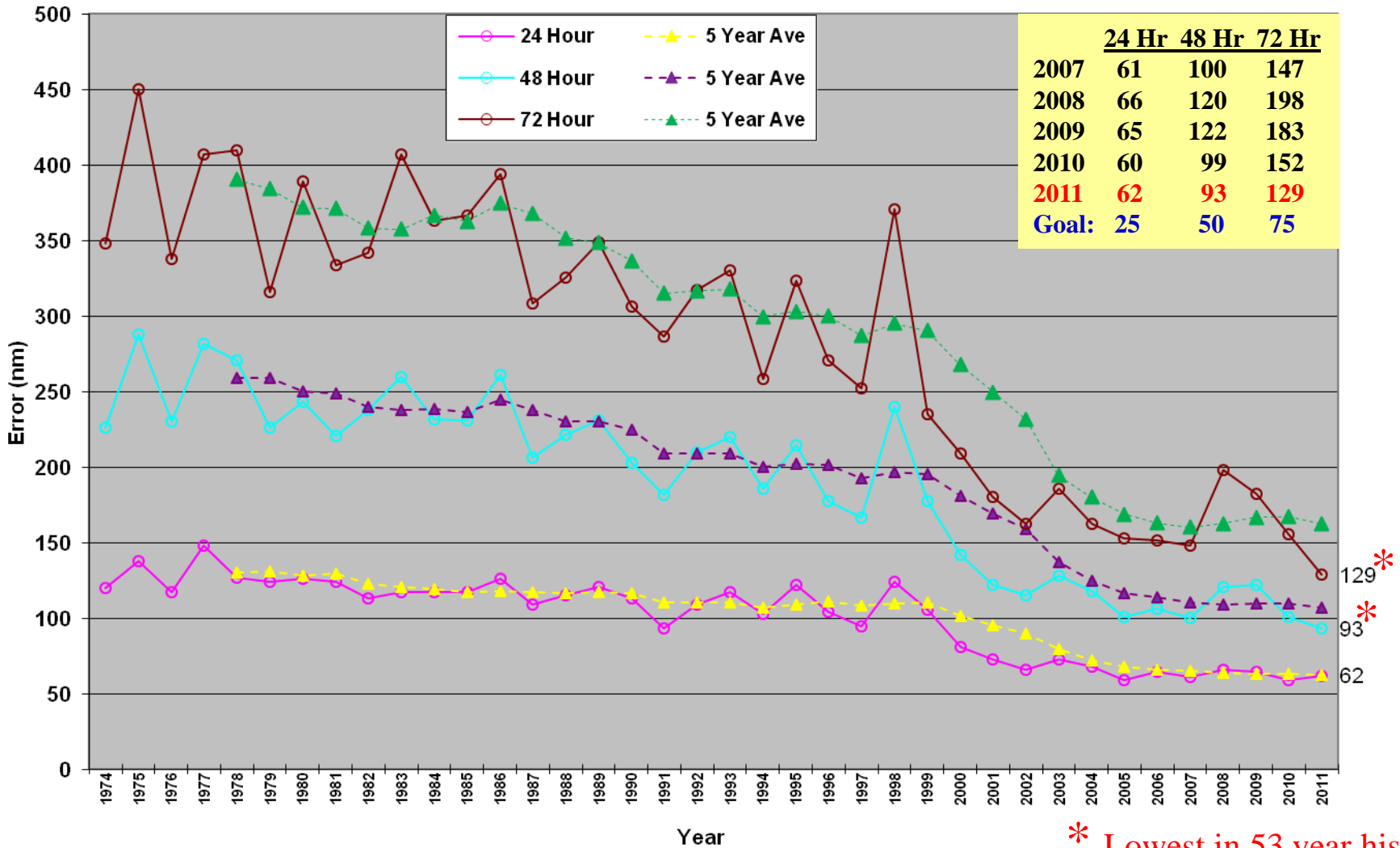
(Southern Hemisphere – Homogeneous)





JTWC TRACK ERRORS

(Western North Pacific - 24-72 Hours)

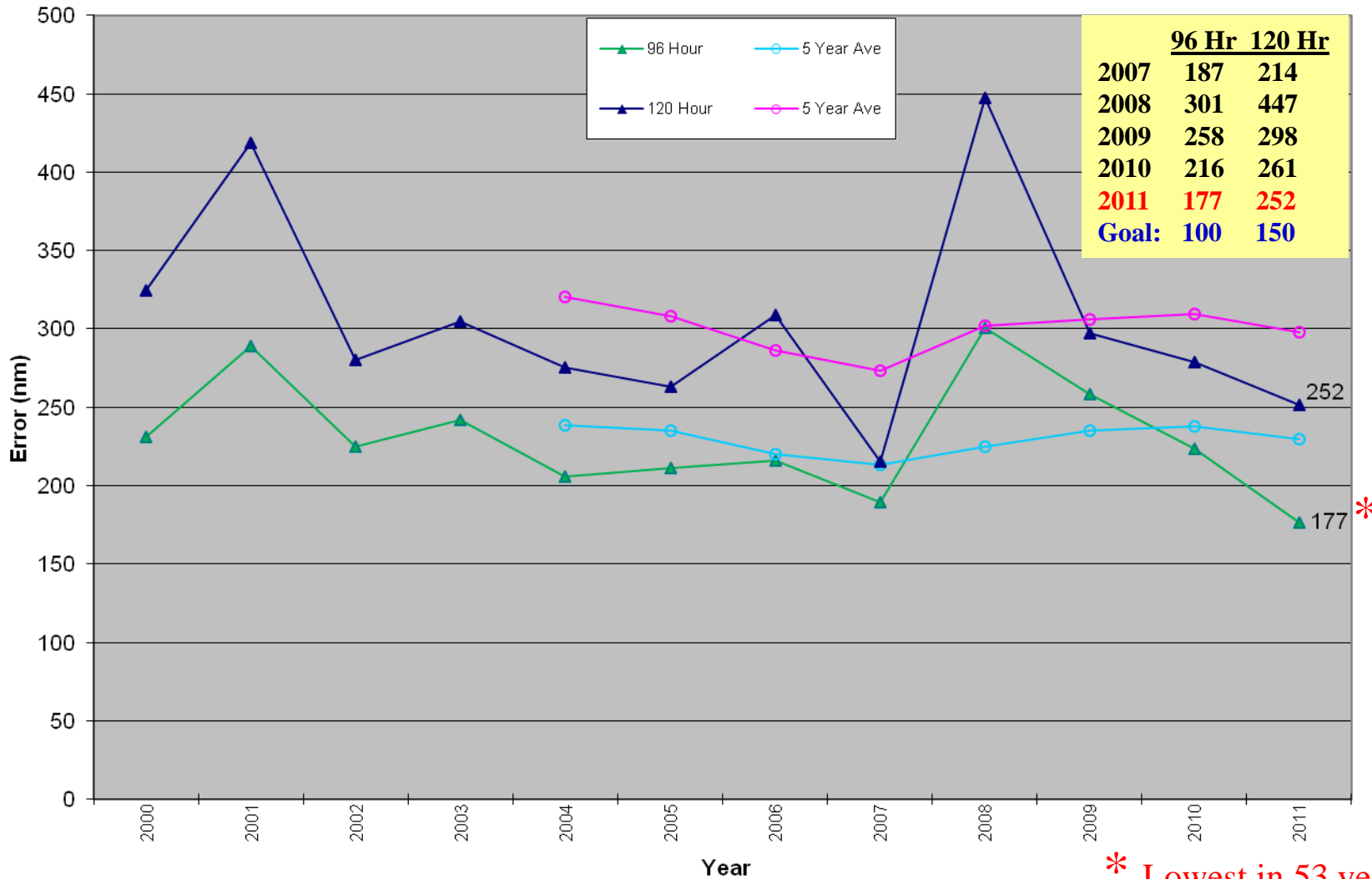


* Lowest in 53 year history



JTWC TRACK ERRORS

(WESTERN NORTH PACIFIC – 96-120 Hours)



* Lowest in 53 year history



2011 WESTERN NORTH PACIFIC INTENSITY ERRORS



Storm by Storm

140 Kt TC - RI Event

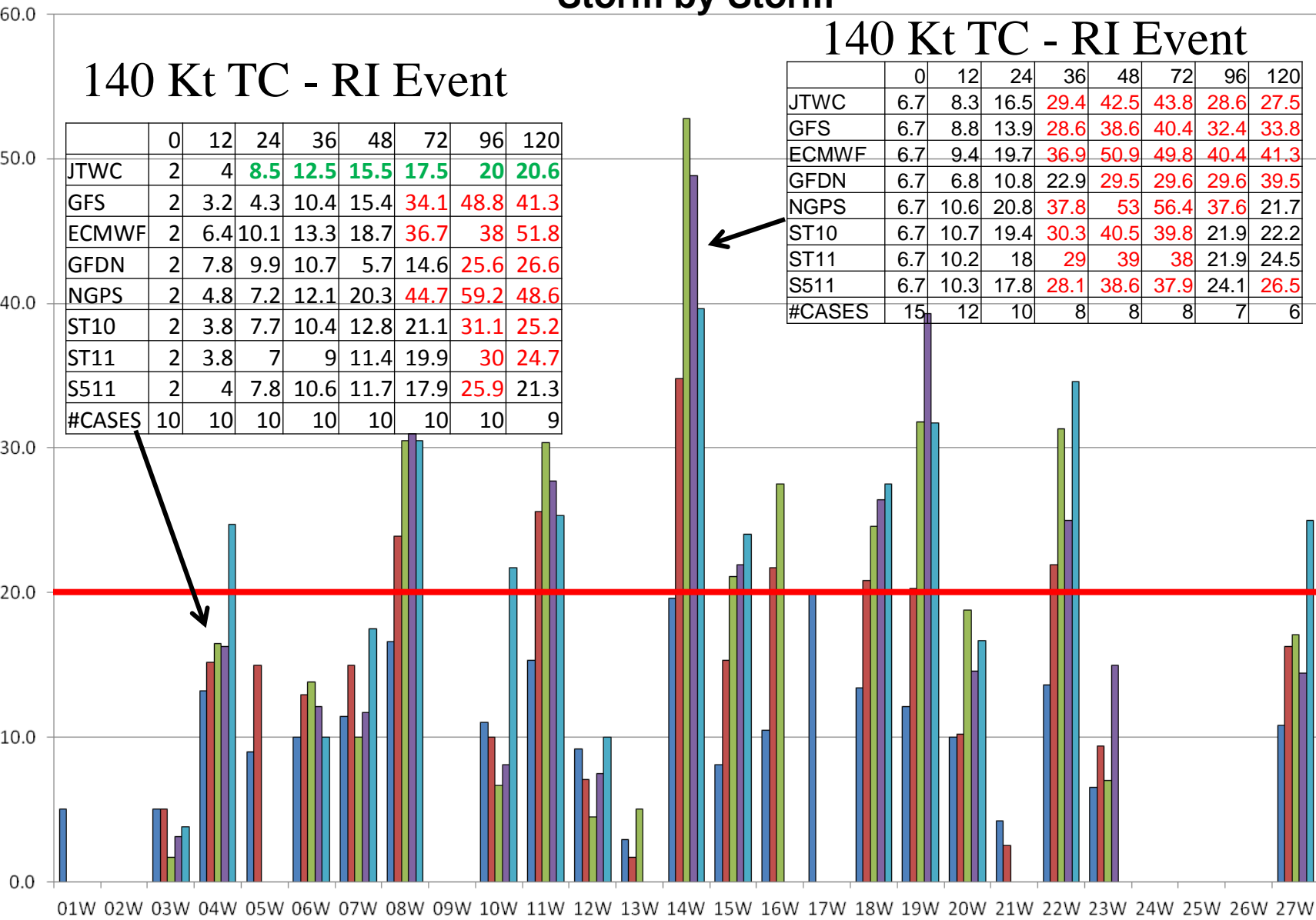
140 Kt TC - RI Event

	0	12	24	36	48	72	96	120
JTWC	2	4	8.5	12.5	15.5	17.5	20	20.6
GFS	2	3.2	4.3	10.4	15.4	34.1	48.8	41.3
ECMWF	2	6.4	10.1	13.3	18.7	36.7	38	51.8
GFDN	2	7.8	9.9	10.7	5.7	14.6	25.6	26.6
NGPS	2	4.8	7.2	12.1	20.3	44.7	59.2	48.6
ST10	2	3.8	7.7	10.4	12.8	21.1	31.1	25.2
ST11	2	3.8	7	9	11.4	19.9	30	24.7
S511	2	4	7.8	10.6	11.7	17.9	25.9	21.3
#CASES	10	10	10	10	10	10	10	9

	0	12	24	36	48	72	96	120
JTWC	6.7	8.3	16.5	29.4	42.5	43.8	28.6	27.5
GFS	6.7	8.8	13.9	28.6	38.6	40.4	32.4	33.8
ECMWF	6.7	9.4	19.7	36.9	50.9	49.8	40.4	41.3
GFDN	6.7	6.8	10.8	22.9	29.5	29.6	29.6	39.5
NGPS	6.7	10.6	20.8	37.8	53	56.4	37.6	21.7
ST10	6.7	10.7	19.4	30.3	40.5	39.8	21.9	22.2
ST11	6.7	10.2	18	29	39	38	21.9	24.5
S511	6.7	10.3	17.8	28.1	38.6	37.9	24.1	26.5
#CASES	15	12	10	8	8	8	7	6



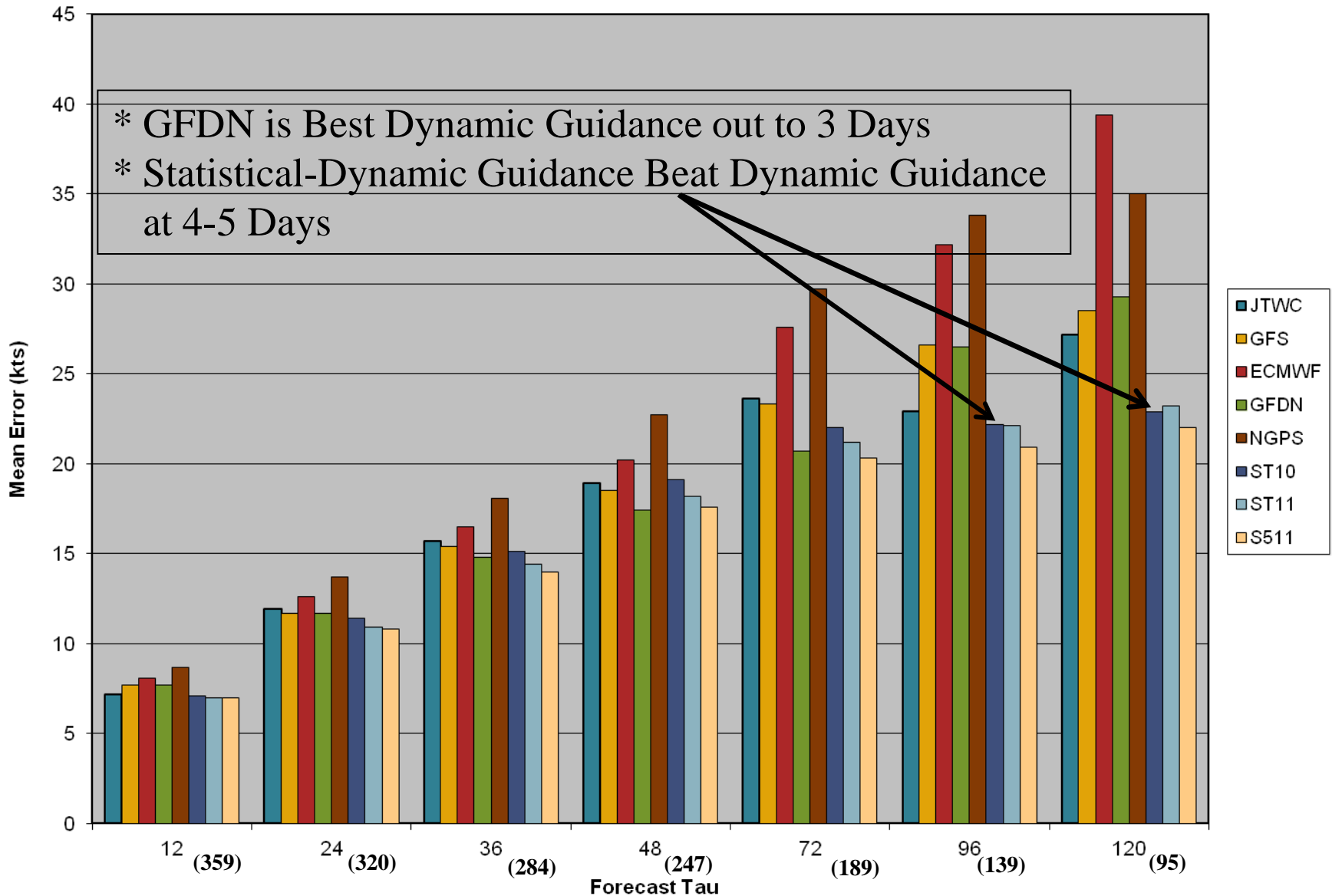
- 24 Hour
- 48 Hour
- 72 Hour
- 96 Hour
- 120 Hour





2011 MODEL INTENSITY ERRORS

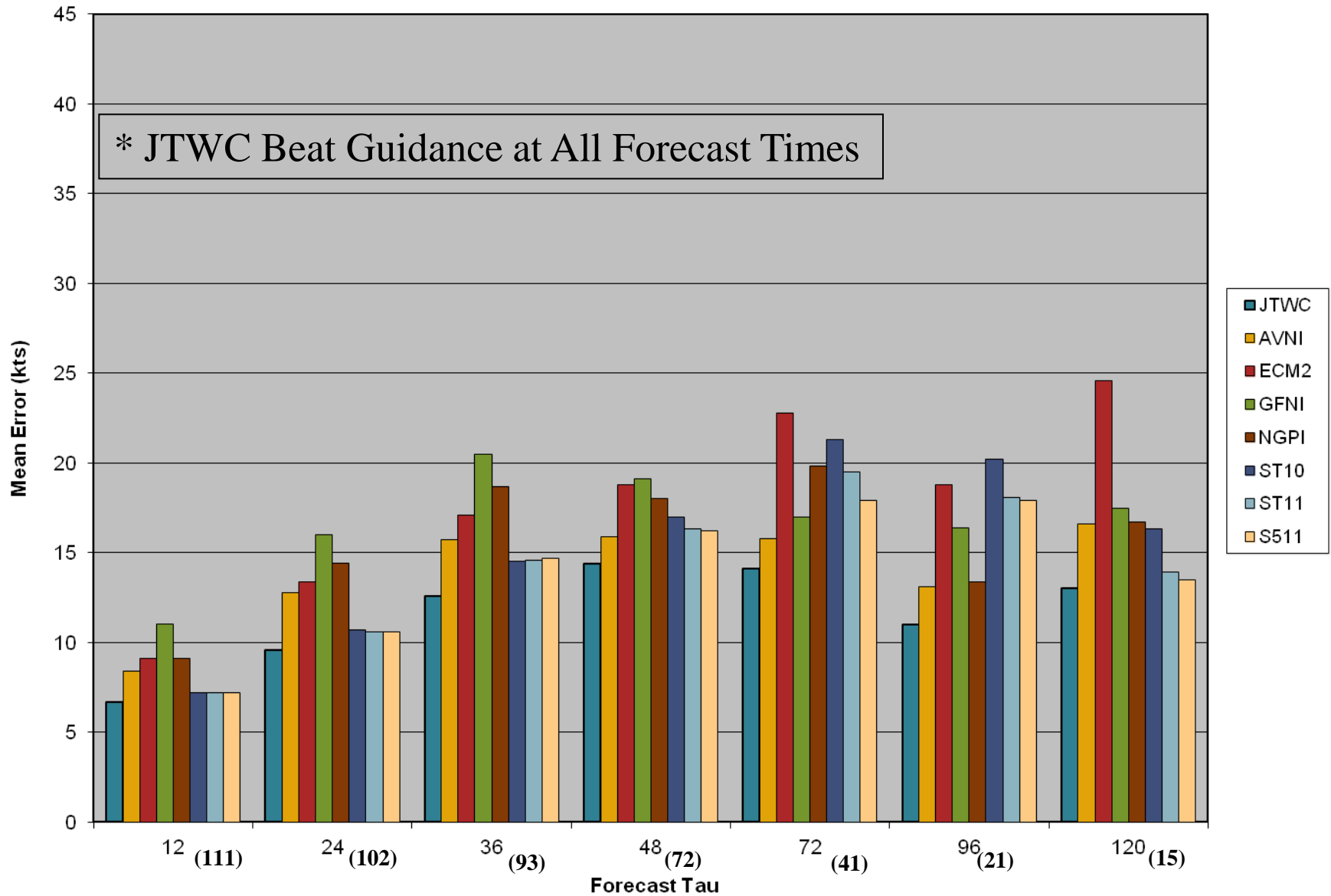
(Western North Pacific – Homogeneous)





2011 MODEL INTENSITY ERRORS

(Southern Hemisphere – Homogeneous)



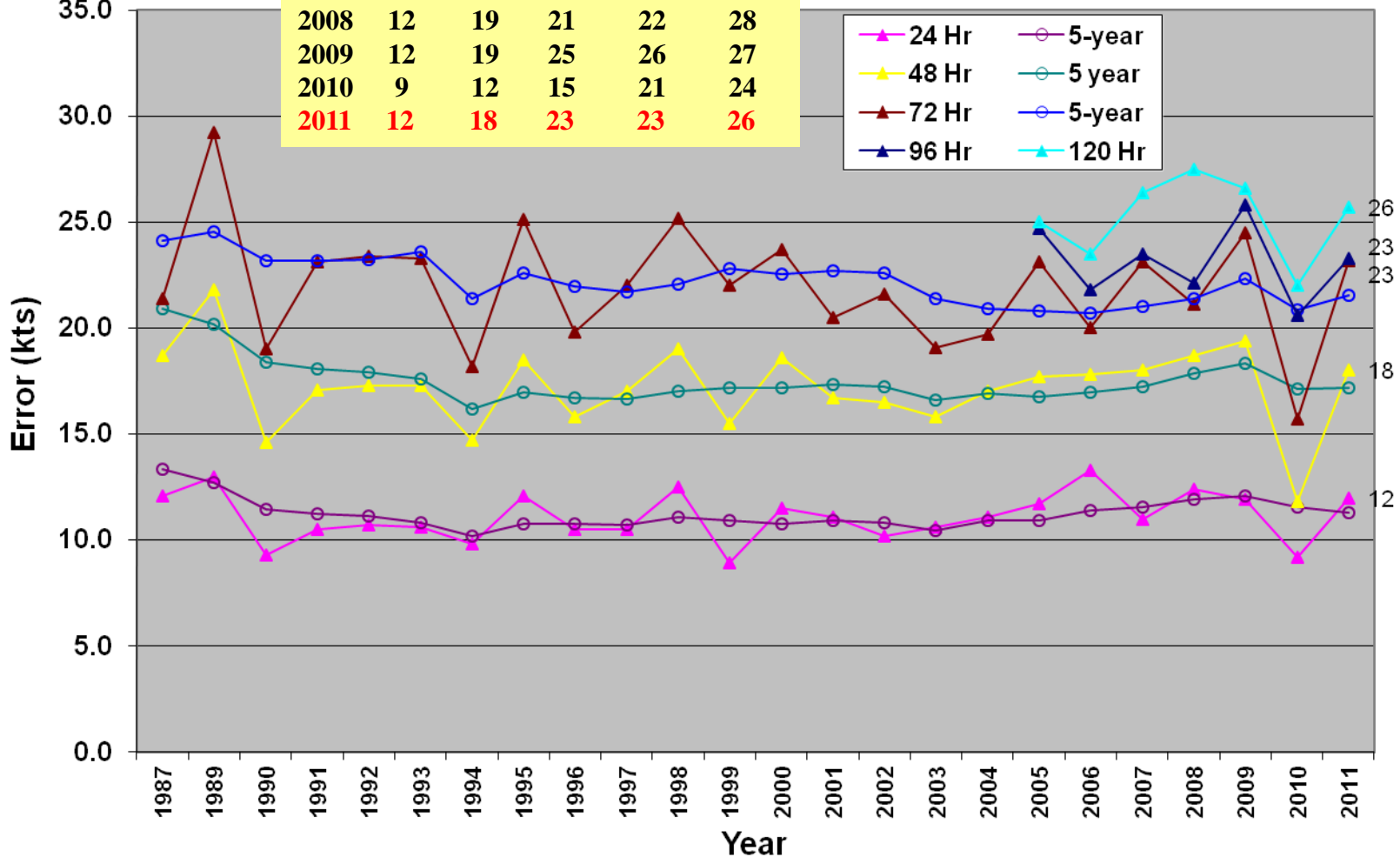


JTWC INTENSITY ERRORS

(Western North Pacific 24 - 120 Hours)



	<u>24 Hr</u>	<u>48 Hr</u>	<u>72 Hr</u>	<u>96Hr</u>	<u>120Hr</u>
2007	11	18	23	24	26
2008	12	19	21	22	28
2009	12	19	25	26	27
2010	9	12	15	21	24
2011	12	18	23	23	26





2012 PROJECTS/EVENTS



- **Genesis or Development potential**
 - Use of radiance data (Ritchie – U AZ)
 - NOGAPS GPI (Fu – UH)
- **Ensemble TC forecasting**
 - AFWA MEPS – 4km WRF
- **Rapid intensification climatology, diagnoses, and prediction**
- **TC / TUTT cell interaction (Patla – UH)**
- **Improvements to data processing, display, analysis and storage**
 - Google Earth tool (GEMINI)
 - PZAL (Collab) archive
 - JTWC Automation Management System (JAMS)
- **AWIPS-2 Evaluation**
- **COAMPS-TC evaluation**
- **GFDN upgrades / coupling**
- **Mark IVB X-Band Upgrade**
- **UH Intern**
- **Low/Med/High Assessment Worksheet – AMS Meeting Talk**
- **Global Hawk**
- **Typhoon Conference**
 - Tokyo, 3-5 April 2012

Low/Medium/High Worksheet	
Invest number:	XXW
Date:	
Time:	Select time
Best Track Coordinates:	
A. LOW LEVEL STRUCTURE 3 CRITERIA	
Symmetry (long/short axis diameter)	
CIMSS 850 mb vorticity value	
If no circ, w/ lies eqward of disturbance?	
B. DVORAK FIX VALUES	
Most recent PGTW final T number	From fdeck.txt
Most recent KNES final T number	
D. MODEL DEVELOPMENT	
	WxMap
	WxMap II
<i>Development within 48 hours</i>	
NOGAPS	
GFS	
JGSM	
UKMET	
ECMWF	
<i>Development within 24 hours</i>	
NOGAPS	
GFS	
JGSM	
UKMET	
ECMWF	
E. MJO STATUS	
OLR anomaly	
F. VERTICAL WIND SHEAR	
Vertical wind shear value	
G. UPPER LEVEL OUTFLOW	
Upper level outflow pattern	
Current recommendation:	
Legend:	
●	INVEST ONLY
●	LOW
●	MEDIUM
●	HIGH
Need help with this worksheet? CLICK HERE	

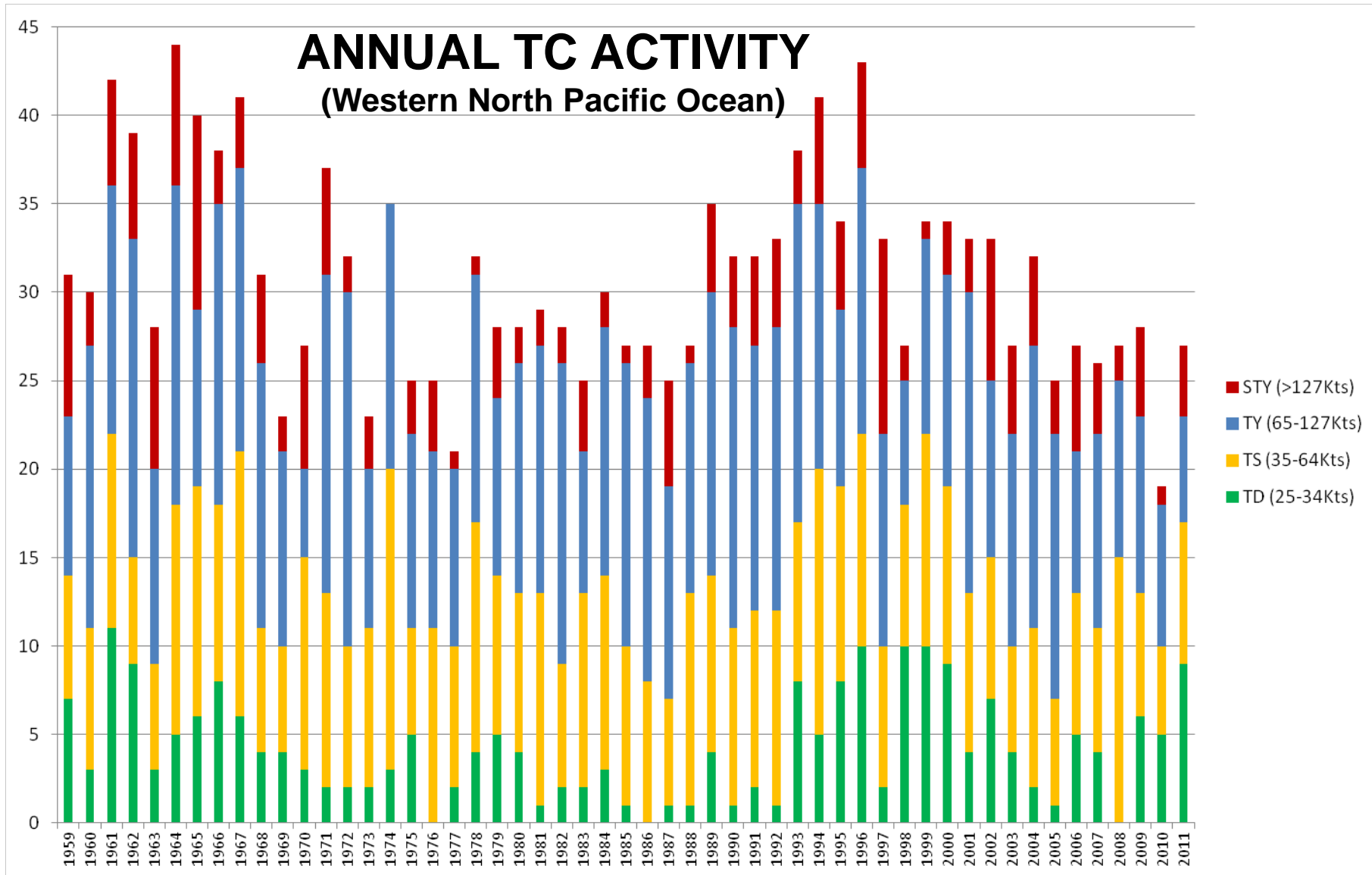


Contact Info

- Commanding Officer
CAPT Mike Angove
michael.angove@navy.mil
(808) 471-0363
- Director
Mr. Robert Falvey
robert.falvey@navy.mil
(808) 474-5301
- Technical Advisor
Mr. Ed Fukada
edward.fukada@navy.mil
(808) 474-5305
- Operations Officer (JTOPS)
LCDR Sarah Follett
sarah.follett@navy.mil
(808) 471-4597
- Techniques Development
Mr. Matt Kucas
matthew.kucas@navy.mil
(808) 471-4597
- Satellite Operations Flight
Capt Jay Neese (deployed)
jay.neese@navy.mil
(808) 474-3946



QUESTIONS





JTWC AOR

